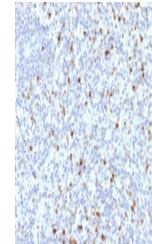


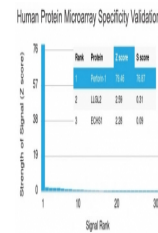
## Product Datasheet

### Perforin Antibody / PRF1 (orb639517)

<b>Description</b>	Perforin is a pore-forming protein that leads to osmotic lysis of the target cells and subsequently ...
<b>Species/Host</b>	Mouse
<b>Reactivity</b>	Human
<b>Conjugation</b>	Unconjugated
<b>Tested Applications</b>	ELISA
<b>Immunogen</b>	A portion of amino acids 413-552 from the human protein was used as the immunogen for the Perforin antibody.
<b>Preservatives</b>	0.2 mg/ml in 1X PBS with 0.1 mg/ml rAlbumin (US sourced) and 0.05% sodium azide
<b>Storage</b>	Store the Perforin antibody at 2-8°C (with azide) or aliquot and store at -20°C or colder (without azide).
<b>Note</b>	For research use only
<b>Application notes</b>	Optimal dilution of the Perforin antibody should be determined by the researcher.
<b>Formula</b>	0.2 mg/ml in 1X PBS with 0.1 mg/ml BSA (US sourced) and 0.05% sodium azide
<b>Isotype</b>	Mouse IgG2b, kappa
<b>Clonality</b>	Monoclonal
<b>Purity</b>	Protein G affinity
<b>Uniprot ID</b>	<a href="#">P14222</a>
<b>Hazard Information</b>	This Perforin antibody is available for research use only.
<b>Dilution Range</b>	ELISA (order BSA/sodium azide-free format for coating)
<b>Expiration Date</b>	12 months from date of receipt.



IHC testing of FFPE human spleen with Pe...



Analysis of HuProt (TM) microarray conta...