
Product Datasheet

SOD1 Antibody / Superoxide Dismutase 1 (orb639515)

Description

Cu-Zn superoxide dismutase-1 (SOD-1) is a well-



radi...

Species/Host

Mouse

Reactivity

Human

Conjugation

Unconjugated

Tested Applications

ELISA

Immunogen

Full length recombinant human protein was used as the immunogen for the SOD1 antibody.

Preservatives

0.2 mg/ml in 1X PBS with 0.1 mg/ml rAlbumin (US sourced) and 0.05% sodium azide

Storage

Store the SOD1 antibody at 2-8°C (with azide) or aliquot and store at -20°C or colder (without azide).

Note

For research use only

Application notes

Optimal dilution of the SOD1 antibody should be determined by the researcher.

Formula

0.2 mg/ml in 1X PBS with 0.1 mg/ml BSA (US sourced) and 0.05% sodium azide

Isotype

Mouse IgG2b, kappa

Clonality

Monoclonal

Purity

Protein G affinity chromatography

Uniprot ID

P00441

Hazard Information

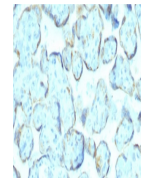
This SOD1 antibody is available for research use only.

Dilution Range

ELISA: 1-5ug/ml for coating (order BSA/sodium azide-free format)

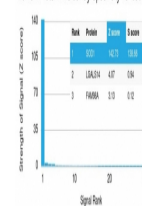
Expiration Date

12 months from date of receipt.

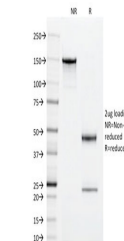


IHC staining of FFPE human placenta with...

Human Protein Microarray Specificity Validation



Analysis of HuProt (TM) microarray conta...



SDS-PAGE analysis of purified, BSA-free ...