
Product Datasheet

Beta-2 Microglobulin Antibody (orb639506)

Description

Recognizes a protein of 12kDa, identified as beta-2


Species/Host

Rabbit

Reactivity

Human

Conjugation

Unconjugated

Tested Applications

FACS, IF, IHC-P, WB

Immunogen

Full length recombinant human protein was used as the immunogen for the recombinant B2M antibody.

Preservatives

0.2 mg/ml in 1X PBS with 0.1 mg/ml rAlbumin (US sourced) and 0.05% sodium azide

Storage

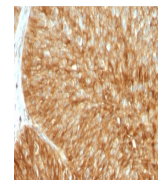
Store the recombinant B2M antibody at 2-8°C (with azide) or aliquot and store at -20°C or colder (without azide).

Note

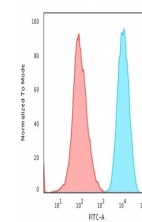
For research use only

Application notes

Optimal dilution of the recombinant B2M antibody should be determined by the researcher.1. The prediluted format is supplied in a dropper bottle and is optimized for use in IHC. After epitope retrieval step (if required), drip mAb solution onto the tissue section and incubate at RT for 30 min.



IHC testing of FFPE human bladder carcin...



Flow cytometry testing of PFA-fixed huma...

Formula

0.2 mg/ml in 1X PBS with 0.1 mg/ml BSA (US sourced) and 0.05% sodium azide

Isotype

Rabbit IgG, kappa

Clonality

Recombinant

Purity

Protein A affinity chromatography

Uniprot ID

P61769

Hazard Information

This recombinant B2M antibody is available for research use only.

Dilution Range

Western blot: 1-2ug/ml, Flow cytometry: 1-2ug/million cells, Immunofluorescence: 2-4ug/ml, Immunohistochemistry (FFPE): 1-2ug/ml for 30 min at RT, Prediluted IHC only format: incubate for 30 min at RT (1)

Expiration Date

12 months from date of receipt.



Western blot testing of human Raji cell ...