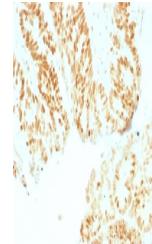


Product Datasheet

Retinoblastoma Antibody / Rb1 (orb639503)

Description	Recognizes a 105kDa phosphoprotein, identified as retinoblastoma (Rb) gene product. It shows no cros...
Species/Host	Mouse
Reactivity	Human, Mouse
Conjugation	Unconjugated
Tested Applications	IHC-P
Immunogen	A human recombinant protein was used as the immunogen for this Rb antibody.
Preservatives	0.2 mg/ml in 1X PBS with 0.1 mg/ml rAlbumin (US sourced) and 0.05% sodium azide
Storage	The Rb antibody (with azide) can be stored at 2-8°C. The azide-free format should be aliquoted and stored at -20°C or colder.
Note	For research use only
Application notes	Titring of the Rb antibody may be required for optimal performance.
Formula	0.2 mg/ml in 1X PBS with 0.1 mg/ml BSA (US sourced) and 0.05% sodium azide
Isotype	Mouse IgG1, kappa
Clonality	Monoclonal
Purity	Protein G affinity chromatography
Uniprot ID	P06400
Hazard Information	This Rb antibody is available for research use only.
Dilution Range	Immunohistochemistry (FFPE): 1-2ug/ml for 30 min at RT
Expiration Date	12 months from date of receipt.



IHC testing of human colon with Rb antib...



IHC testing of human colon with Rb antib...