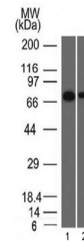


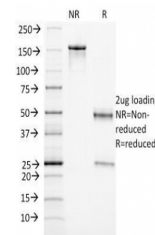
## Product Datasheet

### CD105 Antibody / Endoglin (orb639500)

<b>Description</b>	CD105/Endoglin is a Type I membrane glycoprotein located on cell surfaces and is part of the TGF-beta...
<b>Species/Host</b>	Mouse
<b>Reactivity</b>	Human
<b>Conjugation</b>	Unconjugated
<b>Tested Applications</b>	WB
<b>Immunogen</b>	A partial recombinant protein corresponding to amino acids 74-251 of human CD105/Endoglin was used as the immunogen for the Endoglin antibody.
<b>Preservatives</b>	0.2 mg/ml in 1X PBS with 0.1 mg/ml rAlbumin (US sourced) and 0.05% sodium azide
<b>Storage</b>	Store the Endoglin antibody at 2-8°C (with azide) or aliquot and store at -20°C or colder (without azide).
<b>Note</b>	For research use only
<b>Application notes</b>	Titering of the Endoglin antibody may be required for optimal performance.
<b>Formula</b>	0.2 mg/ml in 1X PBS with 0.1 mg/ml BSA (US sourced) and 0.05% sodium azide
<b>Isotype</b>	Mouse IgG1, kappa
<b>Clonality</b>	Monoclonal
<b>Purity</b>	Protein G affinity chromatography
<b>Uniprot ID</b>	<b>P17813</b>
<b>Hazard Information</b>	This Endoglin antibody is available for research use only.
<b>Dilution Range</b>	Western blot: 1-2ug/ml
<b>Expiration Date</b>	12 months from date of receipt.



Western blot testing of human 1) HeLa an...



SDS-PAGE Analysis of Purified, BSA-Free ...