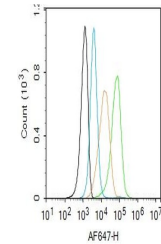


Product Datasheet

MBP (phospho-Tyr203) antibody (orb6395)

Description	MBP (phospho-Tyr203) antibody
Species/Host	Rabbit
Reactivity	Human, Mouse, Rat
Conjugation	Unconjugated
Tested Applications	FC
Immunogen	KLH conjugated Synthesised phosphopeptide derived from human MBP around the phosphorylation site of Tyr203 (AH(p-Y)GS)
Target	phospho-MBP (Tyr203)
Preservatives	0.01M TBS(pH7.4) with 1% rAlbumin, 0.03% Proclin300 and 50% Glycerol.
Form/Appearance	Liquid
Concentration	1mg/ml
Storage	Maintain refrigerated at 2-8°C for up to 2 weeks. For long term storage store at -20°C in small aliquots to prevent freeze-thaw cycles.
Note	For research use only
Isotype	IgG
Clonality	Polyclonal
MW	33 kDa
Uniprot ID	P02686
Dilution Range	Flow-Cyt=1ug/Test
Expiration Date	12 months from date of receipt.



Flow cytometry of U937.Primary Antibody ...