
Product Datasheet

Placental Alkaline Phosphatase Antibody / ALPP (orb639466)

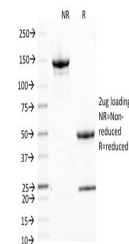
Description

Reacts with a 70kDa membrane-bound isozyme

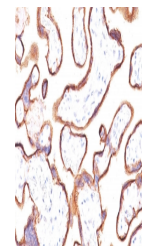
Species/Host	Mouse
Reactivity	Human
Conjugation	Unconjugated
Tested Applications	IHC-P, WB
Immunogen	Recombinant full-length human ALPP protein was used as the immunogen for the Placental Alkaline Phosphatase antibody.
Preservatives	0.2 mg/ml in 1X PBS with 0.1 mg/ml rAlbumin (US sourced) and 0.05% sodium azide
Storage	Store the Placental Alkaline Phosphatase antibody at 2-8°C (with azide) or aliquot and store at -20°C or colder (without azide).
Note	For research use only
Application notes	Optimal dilution of the Placental Alkaline Phosphatase antibody should be determined by the researcher.1. No special pretreatment is required for the immunohistochemical staining of formalin-fixed tissues.2. The prediluted format is supplied in a dropper bottle and is optimized for use in IHC. After epitope retrieval step (if required), drip mAb solution onto the tissue section and incubate at RT for 30 min.
Formula	0.2 mg/ml in 1X PBS with 0.1 mg/ml BSA (US sourced) and 0.05% sodium azide
Isotype	Mouse IgG2b, kappa
Clonality	Monoclonal
Purity	Protein G affinity chromatography
Uniprot ID	P05187
Hazard Information	This Placental Alkaline Phosphatase antibody is available for research use only.
Dilution Range	Immunohistochemistry (FFPE): 0.25-0.5ug/ml for 30 min at RT (1),Prediluted IHC only format: incubate for 30 min at RT (2),Western blot: 1-2ug/ml
Expiration Date	12 months from date of receipt.



Western blot testing of human JEG-3 cell...



SDS-PAGE analysis of purified, BSA-free ...



IHC: Formalin-fixed, paraffin-embedded h...