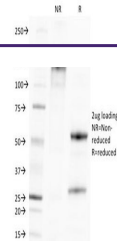

Product Datasheet

**Cytomegalovirus Antibody / CMV / PP65
(orb639462)**

Description

Ten to forty percent of the patients with acquired

	Cytomega...
Species/Host	Mouse
Reactivity	Virus
Conjugation	Unconjugated
Tested Applications	ELISA
Preservatives	0.2 mg/ml in 1X PBS with 0.1 mg/ml rAlbumin (US sourced) and 0.05% sodium azide
Storage	Store the CMV antibody at 2-8°C (with azide) or aliquot and store at -20°C or colder (without azide).
Note	For research use only
Application notes	The concentration stated for each application is a general starting point. Variations in protocols, secondaries and substrates may require the CMV antibody to be titered up or down for optimal performance.
Formula	0.2 mg/ml in 1X PBS with 0.1 mg/ml BSA (US sourced) and 0.05% sodium azide
Isotype	Mouse IgG1, kappa
Clonality	Monoclonal
Purity	Protein G purified CMV antibody
Hazard Information	This CMV antibody is available for research use only.
Dilution Range	ELISA: 1-5ug/ml for coating (order BSA/sodium azide-free format)
Expiration Date	12 months from date of receipt.



SDS-PAGE
Analysis of
Purified,
BSA-Free ...