
Product Datasheet

Basic Cytokeratin Antibody (HMW / Type II) (orb639458)

Description

Twenty human keratins are resolved with two-

a...

Species/Host

Mouse

Reactivity

Human, Mouse, Rat

Conjugation

Unconjugated

Tested Applications

FACS, IF, IHC-P, WB

Immunogen

Solubilized cytokeratin extract from human stratum corneum was used as the immunogen.

Preservatives

0.2 mg/ml in 1X PBS with 0.1 mg/ml rAlbumin (US sourced) and 0.05% sodium azide

Storage

Store the Basic Cytokeratin antibody at 2-8°C (with azide) or aliquot and store at -20°C or colder (without azide).

Note

For research use only

Application notes

Differences in protocols and secondaries may cause the Basic Cytokeratin antibody to need titering for optimal performance.1. FFPE staining requires boiling tissue sections in 10mM citrate buffer, pH 6.0, for 10-20 min followed by cooling at RT for 20 minutes.2. The prediluted format is supplied in a dropper bottle and is optimized for use in IHC. After epitope retrieval step (if required), drip mAb solution onto the tissue section and incubate at RT for 30 min.

Formula

0.2 mg/ml in 1X PBS with 0.1 mg/ml BSA (US sourced) and 0.05% sodium azide

Isotype

Mouse IgG1, kappa

Clonality

Monoclonal

Purity

Protein G purified

Hazard Information

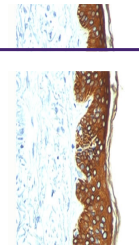
This Basic Cytokeratin antibody AE3 is available for research use only. The formulation is not suitable for therapeutic or diagnostic testing.

Entrez

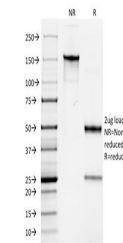
3848

Dilution Range

FACS: 0.5-1ug/million cells,Immunofluorescence: 1-2ug/ml,Western blot: 0.5-1ug/ml,Immunohistochemistry (FFPE): 0.5-1ug/ml for 30 min at RT (1),Prediluted IHC only format: incubate for 30 min at RT (2)



IHC: FFPE skin stained with Basic Cytokeratin antibody



SDS-PAGE Analysis of Purified, BSA-Free ...