

---

## Product Datasheet

### Lambda Light Chain Antibody / Lambda Antibody (orb639451)

**Description**

This antibody is specific to lambda light chain


**Species/Host**

Mouse

**Reactivity**

Human

**Conjugation**

Unconjugated

**Tested Applications**

ELISA

**Immunogen**

Purified human Ig was used as the immunogen for this Lambda Light Chain antibody.

**Preservatives**

0.2 mg/ml in 1X PBS with 0.1 mg/ml rAlbumin (US sourced) and 0.05% sodium azide

**Storage**

Store the Lambda Light Chain antibody at 2-8°C (with azide) or aliquot and store at -20°C or colder (without azide).

**Note**

For research use only

**Application notes**

The concentration stated for each application is a general starting point. Variations in protocols, secondaries and substrates may require the Lambda Light Chain antibody to be titered up or down for optimal performance.1. Staining of formalin-fixed tissues requires boiling tissue sections in 10mM Citrate Buffer, pH 6.0, for 10-20 min followed by cooling at RT for 20 minutes.

**Formula**

0.2 mg/ml in 1X PBS with 0.1 mg/ml BSA (US sourced) and 0.05% sodium azide

**Isotype**

Mouse IgG1, kappa

**Clonality**

Monoclonal

**Purity**

Protein G affinity chromatography

**Hazard Information**

This Lambda Light Chain antibody is available for research use only.

**Entrez**

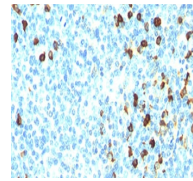
[3535](#)

**Dilution Range**

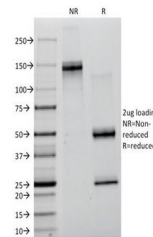
ELISA: 1-5ug/ml for coating (order BSA/sodium azide-free format)

**Expiration Date**

12 months from date of receipt.



IHC:  
Formalin/paraffin  
human tonsil  
stai...



SDS-PAGE  
Analysis of  
Purified, BSA-  
Free ...