

## Product Datasheet

### MART-1 / Melan-A Antibody (orb639450)

**Description**

This antibody recognizes a protein doublet of 20-22kDa,


**Species/Host**

Mouse

**Reactivity**

Human

**Conjugation**

Unconjugated

**Tested Applications**

IHC-P

IHC testing of FFPE human melanoma stain...

**Immunogen**

Recombinant human MART-1 protein was used as the immunogen for this antibody.

**Preservatives**

0.2 mg/ml in 1X PBS with 0.1 mg/ml rAlbumin (US sourced) and 0.05% sodium azide

**Storage**

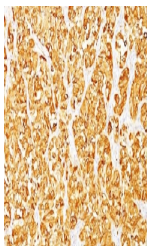
Store the MART-1 antibody at 2-8°C (with azide) or aliquot and store at -20°C or colder (without azide).

**Note**

For research use only

**Application notes**

The concentration stated for each application is a general starting point. Variations in protocols, secondaries and substrates may require the MART-1 antibody to be titrated up or down for optimal performance.1. The prediluted format is supplied in a dropper bottle and is optimized for use in IHC. After epitope retrieval step (if required), drip mAb solution onto the tissue section and incubate at RT for 30 min.



IHC testing of FFPE human melanoma stain...

**Formula**

0.2 mg/ml in 1X PBS with 0.1 mg/ml BSA (US sourced) and 0.05% sodium azide

**Isotype**

Mouse IgG2b, lambda

**Clonality**

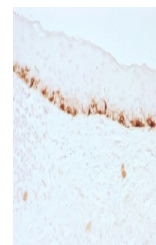
Monoclonal

**Purity**

Protein G affinity chromatography

**Hazard Information**

This MART-1 antibody is available for research use only.



IHC testing of FFPE human skin stained w...

**Entrez**

[2315](#)

**Dilution Range**

Immunohistochemistry (FFPE): 1-2ug/ml for 30 min at RT, Prediluted IHC only format: incubate for 30 min at RT (1)

**Expiration Date**

12 months from date of receipt.