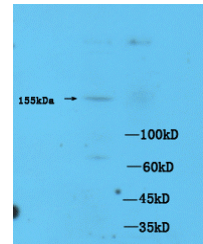


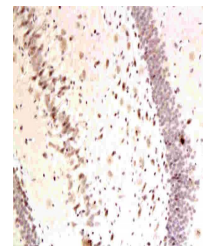
Product Datasheet

ASK1 (phospho-Thr845) antibody (orb6390)

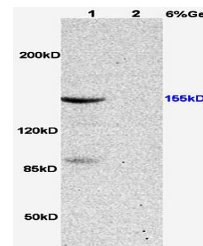
Description	ASK1 (phospho-Thr845) antibody
Species/Host	Rabbit
Reactivity	Human, Mouse, Rat
Conjugation	Unconjugated
Tested Applications	FC, WB
Immunogen	KLH conjugated Synthesised phosphopeptide derived from human ASK1 around the phosphorylation site of Thr845 (TE(p-T)FT)
Target	phospho-ASK1 (Thr845)
Preservatives	0.01M TBS(pH7.4) with 1% rAlbumin, 0.03% Proclin300 and 50% Glycerol.
Form/Appearance	Liquid
Concentration	1mg/ml
Storage	Shipped at 4°C. Store at -20 °C for one year. Avoid repeated freeze/thaw cycles.
Note	For research use only
Isotype	IgG
Clonality	Polyclonal
MW	155 kDa
Uniprot ID	Q99683
Dilution Range	WB=1:500-2000, Flow-Cyt=1µg /test
Expiration Date	12 months from date of receipt.



Western blot of mouse brain tissue using...



Immunohistochemical analysis of paraffin...



Western blot analysis of rat heart lysat...