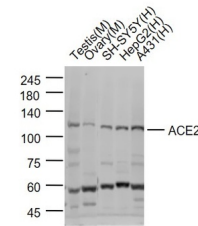


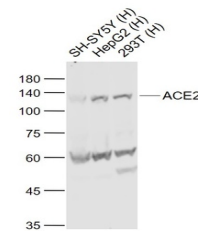
Product Datasheet

ACE2 antibody (orb638863)

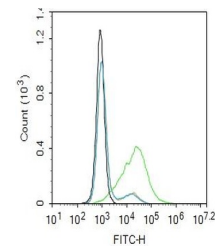
Description	ACE2 antibody
Species/Host	Rabbit
Reactivity	Human
Conjugation	Unconjugated
Tested Applications	FC, ICC, WB
Immunogen	KLH conjugated synthetic peptide derived from human ACE2 (351-450/805 aa)
Target	ACE2
Preservatives	0.01M TBS(pH7.4) with 1% rAlbumin, 0.03% Proclin300 and 50% Glycerol.
Form/Appearance	Liquid
Concentration	1mg/ml
Storage	Maintain refrigerated at 2-8°C for up to 2 weeks. For long term storage store at -20°C in small aliquots to prevent freeze-thaw cycles.
Note	For research use only
Isotype	IgG
Clonality	Polyclonal
MW	87 kDa
Uniprot ID	Q9BYF1
Dilution Range	WB=1:500-2000, ICC=1:100, Flow-Cyt=2ug/Test, IHC-P=1:100-500, IHC-F=1:100-500, IF=1:100-500, ELISA=1:5000-10000
Expiration Date	12 months from date of receipt.



Western blot: Lane 1: Testis (Mouse); Lane 2...



Western blot: Lane 1: SH-SY5Y (Human) Cell...



Flow cytometry of HepG2. Primary Antibody...