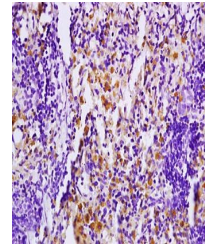


Product Datasheet

MAP4K1 (phospho-Ser171) antibody (orb6374)

Description	MAP4K1 (phospho-Ser171) antibody
Species/Host	Rabbit
Reactivity	Human, Rat
Conjugation	Unconjugated
Tested Applications	FC
Immunogen	KLH conjugated Synthesised phosphopeptide derived from human MAP4K1 around the phosphorylation site of Ser171 (RL(p-S)FI)
Target	phospho-MAP4K1 (Ser171)
Preservatives	0.01M TBS(pH7.4) with 1% rAlbumin, 0.03% Proclin300 and 50% Glycerol.
Form/Appearance	Liquid
Concentration	1mg/ml
Storage	Shipped at 4°C. Store at -20 °C for one year. Avoid repeated freeze/thaw cycles.
Note	For research use only
Isotype	IgG
Clonality	Polyclonal
MW	91 kDa
Uniprot ID	Q92918
Dilution Range	Flow-Cyt=1ug/test, IHC-P=1:100-500, IHC-F=1:100-500, IF=1:100-500, ELISA=1:5000-10000
Expiration Date	12 months from date of receipt.



Immunohistochemical analysis of formalin...