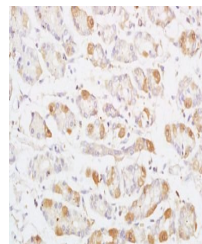


Product Datasheet

MAP3K8 (phospho-Thr290) antibody (orb6367)

Description	MAP3K8 (phospho-Thr290) antibody
Species/Host	Rabbit
Reactivity	Human, Rat
Conjugation	Unconjugated
Tested Applications	IHC-P
Immunogen	KLH conjugated Synthesised phosphopeptide derived from human MAP3K8/Tpl2 around the phosphorylation site of Thr290 (RG(p-T)EI)
Target	Phospho-MAP3K8 (Thr290)
Preservatives	0.01M TBS(pH7.4) with 1% rAlbumin, 0.03% Proclin300 and 50% Glycerol.
Form/Appearance	Liquid
Concentration	1mg/ml
Storage	Shipped at 4°C. Store at -20 °C for one year. Avoid repeated freeze/thaw cycles.
Note	For research use only
Isotype	IgG
Clonality	Polyclonal
MW	53 kDa
Uniprot ID	P41279
Dilution Range	IHC-P=1:100-500
Expiration Date	12 months from date of receipt.



Immunohistochemical analysis of formalin...