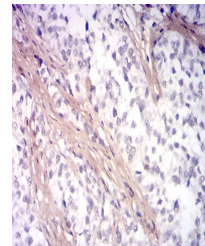


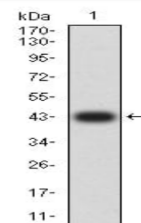
Product Datasheet

PINK1 antibody (orb636622)

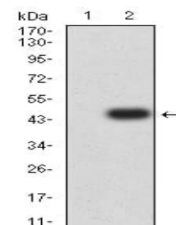
Description	Mouse monoclonal antibody to PINK1
Species/Host	Mouse
Reactivity	Human
Conjugation	Unconjugated
Tested Applications	ELISA, FC, IHC
Immunogen	Purified recombinant fragment of human PINK1 (AA: 112-273) expressed in E. Coli.
Preservatives	Purified antibody in PBS with 0.05% sodium azide
Form/Appearance	PBS with 0.05% sodium azide.
Concentration	1mg/ml
Storage	4°C; -20°C for long term storage. Avoid freeze/thaw cycles.
Note	For research use only
Isotype	Mouse IgG2a
Clonality	Monoclonal
MW	108.6k Da
Entrez	65018
Dilution Range	ELISA: 1/10000, IHC-P: 1/200 - 1/1000, FACS: 1/200 - 1/400, WB: 1/500 - 1/2000
Expiration Date	12 months from date of receipt.



Immunohistochemical staining of PINK1.



Western blot analysis of PINK1.



Western blot analysis of PINK1.