
Product Datasheet

MARCO antibody (orb6345)

Description

MARCO antibody

Species/Host

Rabbit

Reactivity

Guinea pig, Human, Mouse, Rat

Conjugation

Unconjugated

Tested Applications

ICC, IF, IHC-P, WB

Immunogen

KLH conjugated synthetic peptide derived from human MARCO. Please contact us for the exact immunogen sequence. The peptide is available as orb12922.

Target

MARCO

Form/Appearance

10 mM PBS, 0.02% sodium azide

Concentration

- 100 µg (in 200 µl): 0.5 mg/ml- 200 µg (in 400 µl): 0.5 mg/ml

Storage

Store at 4°C for up to two weeks. For long term storage, aliquot and store at -20°C, avoid freeze/thaw cycles.

Note

For research use only

Isotype

IgG

Clonality

Polyclonal

Purity

Polyclonal antibodies are purified by peptide affinity chromatography

MW

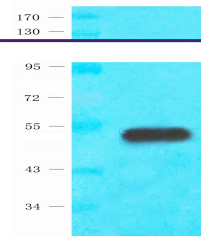
53 kDa

Uniprot ID
[M0R9F7](#), [Q9UEW3](#), [Q60754](#)
NCBI
[006761](#), [006770](#)
Entrez
[8685](#)
Dilution Range

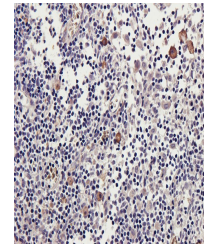
IF/ICC: 1:100-500, IHC-P: 1:100-500, WB: 1:200-1000

Expiration Date

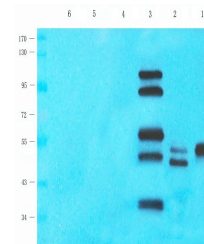
12 months from date of receipt.



WB analysis of guinea pig lymph tissue u...



Immunohistochemical staining of rat lymph...



Western blot analysis of guinea pig lymph...