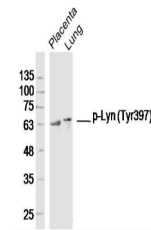


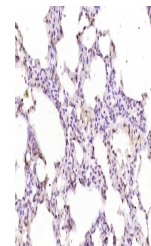
Product Datasheet

Lyn (phospho-Tyr397) antibody (orb6340)

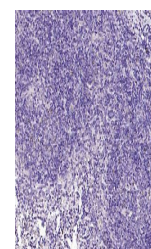
Description	Lyn (phospho-Tyr397) antibody
Species/Host	Rabbit
Reactivity	Human, Mouse, Rat
Conjugation	Unconjugated
Tested Applications	IHC-P, WB
Immunogen	KLH conjugated synthesised phosphopeptide derived from human Lyn around the phosphorylation site of Tyr397 (NE(p-Y)TA)
Target	Phospho-Lyn (Tyr397)
Preservatives	0.01M TBS(pH7.4) with 1% rAlbumin, 0.03% Proclin300 and 50% Glycerol.
Form/Appearance	Liquid: 0.01M TBS(pH7.4) with 1% rAlbumin, 0.03% Proclin300 and 50% Glycerol.
Concentration	1mg/ml
Storage	Shipped at 4°C. Store at -20 °C for one year. Avoid repeated freeze/thaw cycles.
Note	For research use only
Isotype	IgG
Clonality	Polyclonal
Purity	affinity purified by Protein A
MW	56 kDa
Uniprot ID	P07948
Dilution Range	WB=1:500-2000, IHC-P=1:100-500
Expiration Date	12 months from date of receipt.



Western blot analysis of mouse placenta ...



IHC-P image of mouse lung tissue using L...



IHC-P image of mouse spleen tissue using...