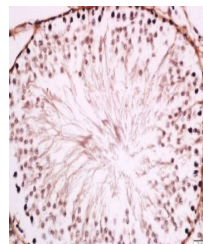


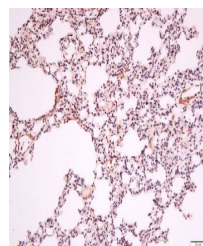
Product Datasheet

Endothelial lipase antibody (orb6326)

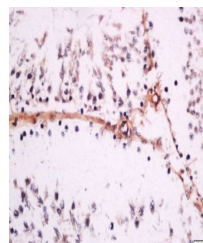
| | |
|----------------------------|-----------------------------------------------------------------------------------------|
| Description | Endothelial lipase antibody |
| Species/Host | Rabbit |
| Reactivity | Rat |
| Conjugation | Unconjugated |
| Tested Applications | ELISA, IF, IHC-Fr, IHC-P, WB |
| Immunogen | KLH conjugated synthetic peptide derived from human Endothelial lipase (301-400/500 aa) |
| Target | Endothelial lipase |
| Preservatives | 0.01M TBS(pH7.4) with 1% rAlbumin, 0.03% Proclin300 and 50% Glycerol. |
| Form/Appearance | Liquid |
| Concentration | 1mg/ml |
| Storage | Shipped at 4°C. Store at -20 °C for one year. Avoid repeated freeze/thaw cycles. |
| Note | For research use only |
| Isotype | IgG |
| Clonality | Polyclonal |
| MW | 55 kDa |
| Uniprot ID | Q9Y5X9 |
| Expiration Date | 12 months from date of receipt. |



Immunohistochemical staining of rat testis...



Immunohistochemical staining of Rat lung...



Immunohistochemical staining of rat testis...