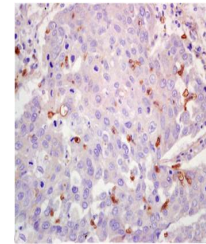


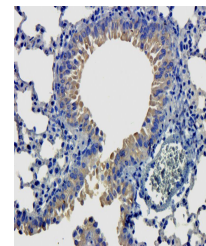
Product Datasheet

LOX-1 antibody (orb6324)

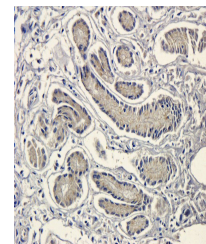
Description	LOX-1 antibody
Species/Host	Rabbit
Conjugation	Unconjugated
Tested Applications	ELISA, ICC, IF, IHC-P, WB
Immunogen	KLH conjugated synthetic peptide derived from human LOX-1. Please contact us for the exact immunogen sequence. The peptide is available as orb374785.
Target	LOX-1
Form/Appearance	10 mM PBS, 0.02% sodium azide
Concentration	- 100 µg (in 200 µl): 0.5 mg/ml- 200 µg (in 400 µl): 0.5 mg/ml
Storage	Store at 4°C for up to two weeks. For long term storage, aliquot and store at -20°C, avoid freeze/thaw cycles.
Note	For research use only
Isotype	IgG
Clonality	Polyclonal
Purity	Polyclonal antibodies are purified by peptide affinity chromatography
MW	31 kDa
Uniprot ID	P78380 , Q9EQ09 , O70156
NCBI	001166103 , 001172632 , 11
Entrez	4973
Dilution Range	IF/ICC: 1:100, WB: 2 µg/ml, IHC-P: 1:200
Expiration Date	12 months from date of receipt.



IHC-P of human lung carcinoma tissue using...



Immunohistochemical staining of mouse lung tissue...



IHC-P image of pig stomach tissue using...