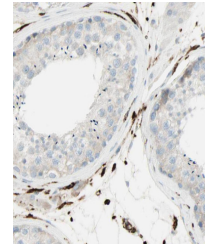


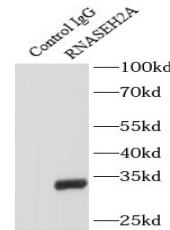
Product Datasheet

RNASEH2A antibody (orb630707)

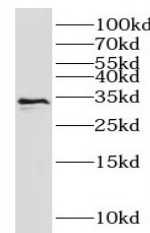
Description	Catalytic subunit of RNase HII, an endonuclease that specifically degrades the RNA of RNA:DNA hybrid...
Species/Host	Rabbit
Reactivity	Human
Conjugation	Unconjugated
Tested Applications	ELISA, IHC, IP, WB
Immunogen	ribonuclease H2, subunit A
Preservatives	PBS with 0.02% sodium azide and 50% glycerol pH 7.3
Form/Appearance	liquid
Storage	-20°C for 24 months(Avoid repeated freeze / thaw cycles)
Note	For research use only
Isotype	IgG
Clonality	Polyclonal
Purity	≥95% as determined by SDS-PAGE
MW	33 kDa
Uniprot ID	O75792
Dilution Range	WB: 1:500-1:2000; IP: 1:200-1:1000; IHC: 1:20-1:200
Expiration Date	12 months from date of receipt.



Immunohistochemistry of paraffin-embedde...



IP Result of anti-RNASEH2A 4ug; Detectio...



human liver tissue were subjected to SDS...