

Product Datasheet

RALYL antibody (orb630501)

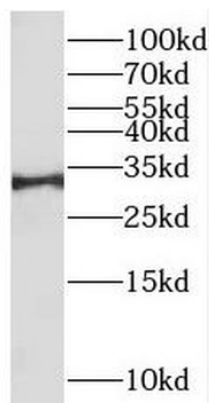
Description	Rabbit polyclonal antibody to RALYL
Species/Host	Rabbit
Reactivity	Human, Mouse
Conjugation	Unconjugated
Tested Applications	ELISA, IHC, WB
Immunogen	RALY RNA binding protein-like
Target	RALYL
Preservatives	liquid
Form/Appearance	liquid
Storage	PBS with 0.02% sodium azide and 50% glycerol pH 7.3,-20°C for 24 months(Avoid repeated freeze / thaw cycles.)
Note	For research use only
Isotype	IgG
Clonality	Polyclonal
Purity	≥95% as determined by SDS-PAGE
MW	32 kDa
Uniprot ID	Q86SE5
Dilution Range	WB: 1:500-1:2000; IHC: 1:20-1:200
Expiration Date	12 months from date of receipt.

Biorbyt Ltd.

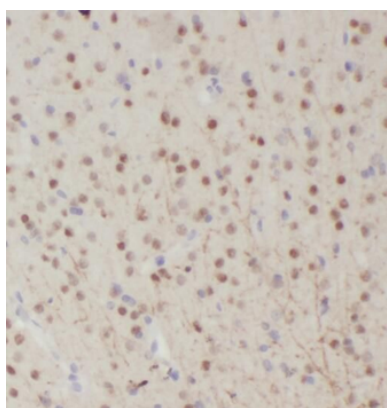
7 Signet Court, Swann's Road,
Cambridge, CB5 8LA, United Kingdom
Email: info@biorbyt.com, support@biorbyt.com
Phone: [+44 \(0\) 1223 859-353](tel:+44(0)1223859353) | Fax: [+1 \(415\) 651-8558](tel:+1(415)6518558)

Biorbyt LLC.

68 TW Alexander Drive,
Durham, NC, 27713, United States
Email: info@biorbyt.com, support@biorbyt.com
Phone: [+1 \(415\) 906-5211](tel:+1(415)9065211) | Fax: [+1 \(415\) 651-8558](tel:+1(415)6518558)



human brain tissue were subjected to SDS PAGE followed by western blot with orb630501 (RALYL antibody) at dilution of 1:800.



Immunohistochemistry of paraffin-embedded mouse brain tissue slide using orb630501 (RALYL Antibody) at dilution of 1:50.

Biorbyt Ltd.

7 Signet Court, Swann's Road,
Cambridge, CB5 8LA, United Kingdom
Email: info@biorbyt.com, support@biorbyt.com
Phone: [+44 \(0\) 1223 859-353](tel:+44(0)1223859353) | Fax: [+1 \(415\) 651-8558](tel:+1(415)6518558)

Biorbyt LLC.

68 TW Alexander Drive,
Durham, NC, 27713, United States
Email: info@biorbyt.com, support@biorbyt.com
Phone: [+1 \(415\) 906-5211](tel:+1(415)9065211) | Fax: [+1 \(415\) 651-8558](tel:+1(415)6518558)