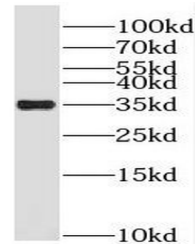


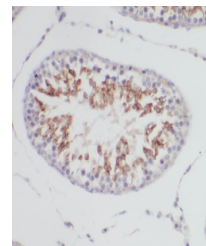
Product Datasheet

PRPS1 antibody (orb630255)

Description	Rabbit polyclonal antibody to PRPS1
Species/Host	Rabbit
Reactivity	Human, Mouse, Rat
Conjugation	Unconjugated
Tested Applications	ELISA, IF, IHC, WB
Immunogen	phosphoribosyl pyrophosphate synthetase 1
Target	PRPS1
Form/Appearance	liquid
Storage	PBS with 0.02% sodium azide and 50% glycerol pH 7.3,-20°C for 24 months(Avoid repeated freeze / thaw cycles.)
Note	For research use only
Isotype	IgG
Clonality	Polyclonal
Purity	≥95% as determined by SDS-PAGE
MW	35 kDa
Uniprot ID	P60891
Dilution Range	WB: 1:500-1:2000; IHC: 1:20-1:200; IF: 1:20-1:200
Expiration Date	12 months from date of receipt.



Jurkat cells were subjected to SDS PAGE ...



Immunohistochemistry of paraffin-embedde...