

Product Datasheet

ICAM1 Antibody (orb627893)

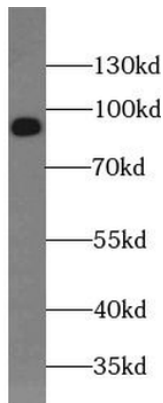
Description	Rabbit polyclonal antibody to ICAM1
Species/Host	Rabbit
Reactivity	Human
Conjugation	Unconjugated
Tested Applications	ELISA, FC, IF, IHC, IP, WB
Immunogen	intercellular adhesion molecule 1
Target	ICAM1
Form/Appearance	liquid
Storage	Maintain refrigerated at 2-8°C for up to 2 weeks. For long term storage store at -20°C in small aliquots to prevent freeze-thaw cycles.
Note	For research use only
Isotype	IgG
Clonality	Polyclonal
Antibody Type	Primary Antibody
Purity	≥95% as determined by SDS-PAGE
MW	90 kDa
Uniprot ID	P05362
Dilution Range	WB: 1:200-1:2000; IP: 1:500-1:5000; IHC: 1:50-1:200; IF: 1:50-1:500
Expiration Date	12 months from date of receipt.

Biorbyt Ltd.

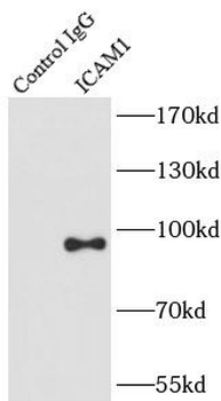
7 Signet Court, Swann's Road,
Cambridge, CB5 8LA, United Kingdom
Email: info@biorbyt.com, support@biorbyt.com
Phone: [+44 \(0\) 1223 859-353](tel:+44(0)1223859353) | Fax: [+1 \(415\) 651-8558](tel:+1(415)6518558)

Biorbyt LLC.

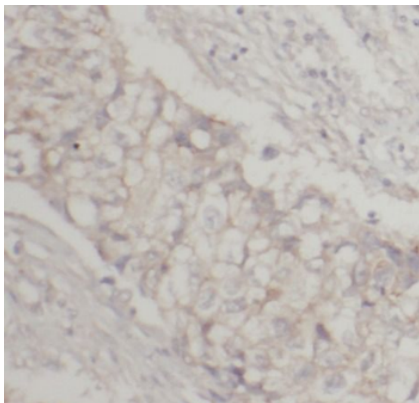
68 TW Alexander Drive,
Durham, NC, 27713, United States
Email: info@biorbyt.com, support@biorbyt.com
Phone: [+1 \(415\) 906-5211](tel:+1(415)9065211) | Fax: [+1 \(415\) 651-8558](tel:+1(415)6518558)



L02 cells were subjected to SDS PAGE followed by western blot with orb627893 (ICAM-1 antibody) at dilution of 1:800.



IP Result of anti-ICAM-1 (IP: orb627893, 4 ug; Detection: orb627893 1:1000) with Raji cells lysate 1320 ug.



Immunohistochemistry of paraffin-embedded human lung cancer using orb627893 (ICAM-1 antibody) at dilution of 1:50.

Biorbyt Ltd.

7 Signet Court, Swann's Road,
Cambridge, CB5 8LA, United Kingdom
Email: info@biorbyt.com, support@biorbyt.com
Phone: [+44 \(0\) 1223 859-353](tel:+44(0)1223859353) | Fax: [+1 \(415\) 651-8558](tel:+1(415)6518558)

Biorbyt LLC.

68 TW Alexander Drive,
Durham, NC, 27713, United States
Email: info@biorbyt.com, support@biorbyt.com
Phone: [+1 \(415\) 906-5211](tel:+1(415)9065211) | Fax: [+1 \(415\) 651-8558](tel:+1(415)6518558)