
Product Datasheet

KLF2 antibody (orb6272)

Description

KLF2 antibody

Species/Host

Rabbit

Reactivity

Bovine, Equine, Human, Mouse, Porcine, Rat, Sheep

Conjugation

Unconjugated

Tested

ELISA, ICC, IF, IHC-P, WB

Applications
Immunogen

KLH conjugated synthetic peptide derived from human KLF2. Please contact us for the exact immunogen sequence. The peptide is available as orb374784.

Target

KLF2

Form/Appearance

10 mM PBS, 0.02% sodium azide

Concentration

- 100 µg (in 200 µl): 0.5 mg/ml- 200 µg (in 400 µl): 0.5 mg/ml

Storage

Store at 4°C for up to two weeks. For long term storage, aliquot and store at -20°C, avoid freeze/thaw cycles.

Note

For research use only

Isotype

IgG

Clonality

Polyclonal

Purity

Polyclonal antibodies are purified by peptide affinity chromatography

MW

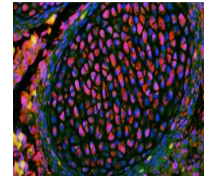
37 kDa

Uniprot ID
[Q60843](#), [Q9Y5W3](#), [Q9ET58](#)
NCBI
[057354](#), [21](#), [016270](#), [11](#)
Entrez
[10365](#)
Dilution Range

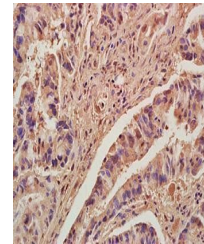
IF/ICC: 1:200, WB:1:200, IHC-P:1:200

Expiration Date

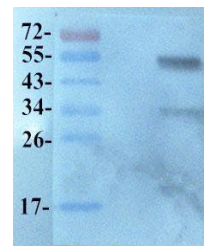
12 months from date of receipt.



IHC-P of mouse embryo tissue (dilution a...



Immunohistochemical analysis of formalin...



WB analysis of Rat heart (Lane 1) using

...