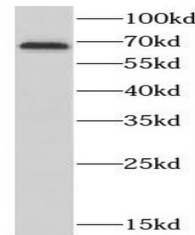


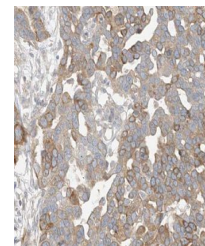
## Product Datasheet

### CTDSPL2 antibody (orb626100)

<b>Description</b>	Rabbit polyclonal antibody to CTDSPL2
<b>Species/Host</b>	Rabbit
<b>Reactivity</b>	Human, Mouse, Rat
<b>Conjugation</b>	Unconjugated
<b>Tested Applications</b>	ELISA, IHC, WB
<b>Immunogen</b>	CTD(carboxy-terminal domain, RNA polymerase II, polypeptide A) small phosphatase like 2
<b>Target</b>	CTDSPL2
<b>Form/Appearance</b>	liquid
<b>Storage</b>	PBS with 0.02% sodium azide and 50% glycerol pH 7.3,-20°C for 24 months(Avoid repeated freeze / thaw cycles.)
<b>Note</b>	For research use only
<b>Isotype</b>	IgG
<b>Clonality</b>	Polyclonal
<b>Purity</b>	≥95% as determined by SDS-PAGE
<b>MW</b>	67 kDa
<b>Uniprot ID</b>	<a href="#">Q05D32</a>
<b>Dilution Range</b>	WB: 1:500-1:2000; IHC: 1:20-1:200
<b>Expiration Date</b>	12 months from date of receipt.



MCF7 cells were subjected to SDS PAGE fo...



Immunohistochemistry of paraffin-embedde...