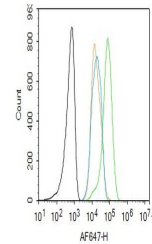


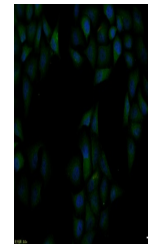
Product Datasheet

JAK2 (phospho-Tyr221) antibody (orb6251)

Description	JAK2 (phospho-Tyr221) antibody
Species/Host	Rabbit
Reactivity	Human, Zebrafish
Conjugation	Unconjugated
Tested Applications	FC, ICC, IHC-P
Immunogen	KLH conjugated synthesised phosphopeptide derived from human JNK2 around the phosphorylation site of Tyr221 (IQD(p-Y)HI)
Target	phospho-JAK2 (Tyr221)
Preservatives	0.01M TBS(pH7.4) with 1% rAlbumin, 0.03% Proclin300 and 50% Glycerol.
Form/Appearance	Liquid
Concentration	1mg/ml
Storage	Maintain refrigerated at 2-8°C for up to 2 weeks. For long term storage store at -20°C in small aliquots to prevent freeze-thaw cycles.
Note	For research use only
Isotype	IgG
Clonality	Polyclonal
MW	131 kDa
Uniprot ID	O60674
Dilution Range	IHC-P=1:100-500, ICC=1:100, Flow-Cyt=1ug/Test, IHC-F=1:100-500, IF=1:100-500, ELISA=1:5000-10000
Expiration Date	12 months from date of receipt.



Flow cytometry of HL-60. Primary Antibody...



ICC analysis of HeLa cell using phospho-...