
Product Datasheet

Mannose Receptor/MRC1 Antibody (orb623873)

Description

Mannose Receptor/MRC1 Antibody

Species/Host

Rabbit

Reactivity

Human, Monkey, Mouse, Rat

Conjugation

Unconjugated

Tested Applications

ELISA, IF, IHC, WB

Immunogen

E.coli-derived human Mannose Receptor/MRC1 recombinant protein (Position: D21-A1140).

Form/Appearance

Lyophilized

Concentration

Adding 0.2 ml of distilled water will yield a concentration of 500 µg/ml.

Storage

Store at -20°C for one year from date of receipt. After reconstitution, at 4°C for one month. It can also be aliquotted and stored frozen at -20°C for six months. Avoid repeated freeze-thaw cycles.

Note

For research use only

Application notes

Tested Species: In-house tested species with positive results. Other applications have not been tested. Optimal dilutions should be determined by end users. Add 0.2ml of distilled water will yield a concentration of 500ug/ml.

Isotype

Rabbit IgG

Clonality

Polyclonal

MW

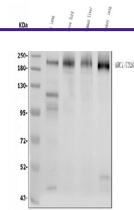
190-200 kDa

Uniprot ID
[P22897](#)
Dilution Range

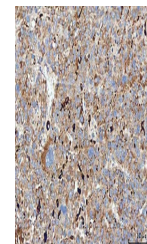
 Western blot, 0.25-0.5µg/ml, Human, Mouse Immunohistochemistry (Paraffin-embedded Section), 0.5-1µg/ml, Human, Mouse, Rat Flow Cytometry, 1-3µg/1x10⁶ cells, Human, Mouse Direct ELISA, 0.1-0.5µg/ml, Human

Expiration Date

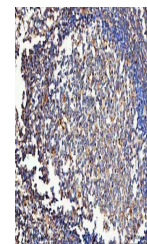
12 months from date of receipt.



Western blot analysis of MRC1 using anti-...



IHC analysis of MRC1 using anti-MRC1 ant...



IHC analysis of MRC1 using anti-MRC1 ant...