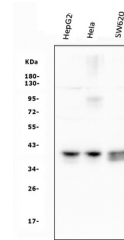


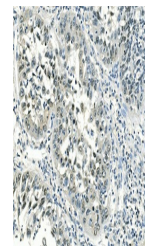
## Product Datasheet

### ATF1 Antibody(monoclonal, 7F8) (orb623833)

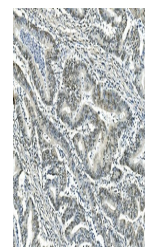
<b>Description</b>	ATF1 Antibody(monoclonal, 7F8)
<b>Species/Host</b>	Mouse
<b>Reactivity</b>	Human
<b>Conjugation</b>	Unconjugated
<b>Tested Applications</b>	FC, ICC, IF, IHC, WB
<b>Immunogen</b>	E.coli-derived human ATF1 recombinant protein (Position: M1-V271). Human ATF1 shares 91% amino acid (aa) sequence identity with mouse ATF1.
<b>Form/Appearance</b>	Lyophilized
<b>Concentration</b>	Adding 0.2 ml of distilled water will yield a concentration of 500 µg/ml.
<b>Storage</b>	Store at -20°C for one year from date of receipt. After reconstitution, at 4°C for one month. It can also be aliquotted and stored frozen at -20°C for six months. Avoid repeated freeze-thaw cycles.
<b>Note</b>	For research use only
<b>Application notes</b>	Tested Species: In-house tested species with positive results. Other applications have not been tested. Optimal dilutions should be determined by end users. . Add 0.2ml of distilled water will yield a concentration of 500µg/ml.
<b>Isotype</b>	Mouse IgG2a
<b>Clonality</b>	Monoclonal
<b>MW</b>	38 kDa
<b>Uniprot ID</b>	<b>P18846</b>
<b>Sensitivity</b>	> 5000 cells
<b>Expiration Date</b>	12 months from date of receipt.



Western blot analysis of ATF1 using anti-ATF1 antibody.



IHC analysis of ATF1 using anti-ATF1 antibody.



IHC analysis of ATF1 using anti-ATF1 antibody.