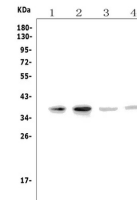


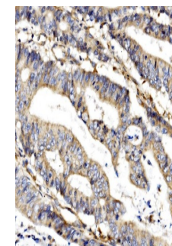
Product Datasheet

MC4-R/MC4R Antibody (orb623809)

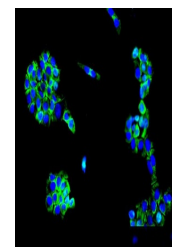
| | |
|----------------------------|---|
| Description | MC4-R/MC4R Antibody |
| Species/Host | Rabbit |
| Reactivity | Human, Mouse, Rat |
| Conjugation | Unconjugated |
| Tested Applications | FC, ICC, IF, IHC, WB |
| Immunogen | A synthetic peptide corresponding to a sequence of human MC4-R/MC4R (QELRKTFKEIICCYPLGGLCDLSSRY). |
| Form/Appearance | Lyophilized |
| Concentration | Adding 0.2 ml of distilled water will yield a concentration of 500 µg/ml. |
| Storage | Store at -20°C for one year from date of receipt. After reconstitution, at 4°C for one month. It can also be aliquotted and stored frozen at -20°C for six months. Avoid repeated freeze-thaw cycles. |
| Note | For research use only |
| Application notes | Tested Species: In-house tested species with positive results. Other applications have not been tested. Optimal dilutions should be determined by end users. . Add 0.2ml of distilled water will yield a concentration of 500ug/ml. |
| Isotype | Rabbit IgG |
| Clonality | Polyclonal |
| MW | 37 kDa |
| Uniprot ID | P32245 |
| Expiration Date | 12 months from date of receipt. |



WB analysis using anti-MC4R antibody.Lan...



IHC analysis of MC4R using anti-MC4R ant...



IF analysis of MC4R using anti-MC4R anti...