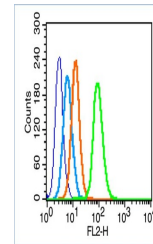


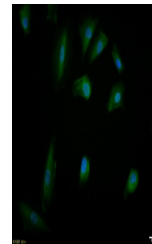
## Product Datasheet

### IRS1 (phospho-Ser789) antibody (orb6238)

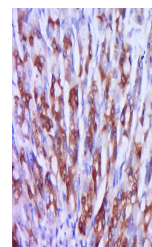
<b>Description</b>	IRS1 (phospho-Ser789) antibody
<b>Species/Host</b>	Rabbit
<b>Reactivity</b>	Human, Rat
<b>Conjugation</b>	Unconjugated
<b>Tested Applications</b>	FC, ICC, IHC-P
<b>Immunogen</b>	KLH conjugated synthesised phosphopeptide derived from human IRS1 around the phosphorylation site of Ser789 (SS(p-S)SG)
<b>Target</b>	phospho-IRS1 (Ser789)
<b>Preservatives</b>	0.01M TBS(pH7.4) with 1% rAlbumin, 0.03% Proclin300 and 50% Glycerol.
<b>Form/Appearance</b>	Liquid
<b>Concentration</b>	1mg/ml
<b>Storage</b>	Maintain refrigerated at 2-8°C for up to 2 weeks. For long term storage store at -20°C in small aliquots to prevent freeze-thaw cycles.
<b>Note</b>	For research use only
<b>Isotype</b>	IgG
<b>Clonality</b>	Polyclonal
<b>MW</b>	132 kDa
<b>Uniprot ID</b>	<b>P35568</b>
<b>Dilution Range</b>	IHC-P=1:100-500, ICC=1:100, Flow-Cyt=1µg /test, IHC-F=1:100-500, IF=1:100-500, ELISA=1:5000-10000
<b>Expiration Date</b>	12 months from date of receipt.



Flow cytometry of HeLa(blue line).Primar...



ICC analysis of A549 cell using phospho-...



IHC-P analysis of Rat stomach using p-IR...