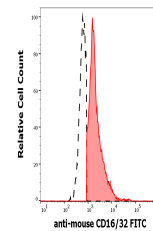


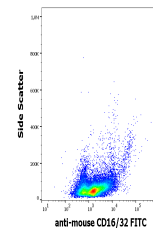
## Product Datasheet

### CD16 antibody (FITC) (orb623582)

<b>Description</b>	Rat monoclonal antibody against CD16 conjugated to FITC
<b>Reactivity</b>	Mouse
<b>Conjugation</b>	FITC
<b>Tested Applications</b>	FC
<b>Immunogen</b>	Murine pre-B cells
<b>Target</b>	CD16/CD32
<b>Preservatives</b>	Phosphate buffered saline (PBS), pH 7.4, 15 mM sodium azide
<b>Concentration</b>	0.5 mg/ml
<b>Storage</b>	Store at 2-8°C. Protect from prolonged exposure to light. Do not freeze.
<b>Note</b>	For research use only
<b>Application notes</b>	Flow cytometry: Recommended dilution: 2-5 µg/ml.
<b>Isotype</b>	Rat IgG2a lambda
<b>Clonality</b>	Monoclonal
<b>Purity</b>	Purified antibody is conjugated with fluorescein isothiocyanate (FITC) under optimum conditions and unconjugated antibody and free fluorochrome are removed by size-exclusion chromatography.
<b>Dilution Range</b>	FACS: 2-5 µg/ml
<b>Expiration Date</b>	12 months from date of receipt.



Separation of murine CD16/32 positive ce...



Flow cytometry surface staining pattern ...