

---

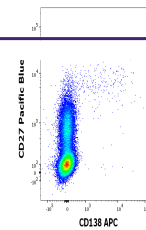
## Product Datasheet

### Syndecan 1 antibody (APC) (orb623578)

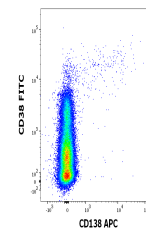
**Description**

Mouse monoclonal antibody against Syndecan 1

<b>Reactivity</b>	Human, Primate, Rat
<b>Conjugation</b>	APC
<b>Tested Applications</b>	FC
<b>Immunogen</b>	A mixture of U266 and XG-1 human myeloma cell lines
<b>Target</b>	CD138
<b>Preservatives</b>	Stabilizing phosphate buffered saline (PBS), pH 7.4, 15 mM sodium azide
<b>Storage</b>	Store at 2-8°C. Protect from prolonged exposure to light. Do not freeze.
<b>Note</b>	For research use only
<b>Application notes</b>	Flow cytometry: The reagent is designed for analysis of human blood cells using 10 µl reagent / 100 µl of whole blood or 10 <sup>6</sup> cells in a suspension. The content of a vial (1 ml) is sufficient for 100 tests.
<b>Isotype</b>	Mouse IgG1 kappa
<b>Clonality</b>	Monoclonal
<b>Purity</b>	Purified antibody is conjugated with activated allophycocyanin (APC) under optimum conditions and unconjugated antibody and free fluorochrome are removed by size-exclusion chromatography.
<b>Uniprot ID</b>	<a href="#">P18827</a>
<b>Entrez</b>	<a href="#">6382</a>
<b>Dilution Range</b>	Flow cytometry: The reagent is designed for analysis of human blood cells using 10 µl reagent / 100 µl of whole blood or 10 <sup>6</sup> cells in a suspension. The content of a vial (1 ml) is sufficient for 100 tests.
<b>Expiration Date</b>	12 months from date of receipt.



Staining pattern of Anti-human CD38 FITC...



Staining pattern of Anti-human CD38 FITC...



Reactivity of Anti-human CD38 FITC antib...