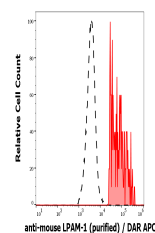


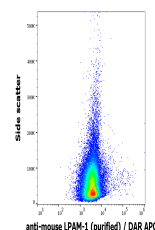
## Product Datasheet

### LPAM-1 antibody (orb623567)

<b>Description</b>	Rat monoclonal antibody to LPAM-1
<b>Reactivity</b>	Mouse
<b>Conjugation</b>	Unconjugated
<b>Tested Applications</b>	FC, IHC-Fr, IP
<b>Immunogen</b>	TK1 cells
<b>Target</b>	LPAM-1
<b>Preservatives</b>	Phosphate buffered saline (PBS), pH 7.4, 15 mM sodium azide
<b>Concentration</b>	1 mg/ml
<b>Storage</b>	Store at 2-8°C. Do not freeze.
<b>Note</b>	For research use only
<b>Application notes</b>	Flow cytometry: Recommended dilution: 1-4 µg/ml.
<b>Isotype</b>	Rat IgG2a kappa
<b>Clonality</b>	Monoclonal
<b>Purity</b>	Purified by protein-G affinity chromatography.
<b>Dilution Range</b>	Flow cytometry: Recommended dilution: 1-4 µg/ml.
<b>Expiration Date</b>	12 months from date of receipt.



Separation of murine LPAM-1 positive cel...



Flow cytometry surface staining pattern ...