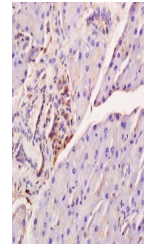


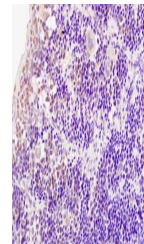
Product Datasheet

IRF7 (phospho-Ser471/472) antibody (orb6233)

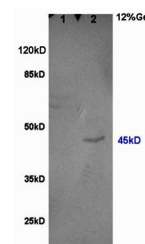
Description	IRF7 (phospho-Ser471/472) antibody
Species/Host	Rabbit
Reactivity	Human, Mouse, Rat
Conjugation	Unconjugated
Tested Applications	ICC, IHC-P, WB
Immunogen	KLH conjugated synthesised phosphopeptide derived from human IRF7 around the phosphorylation site of Ser471/472 (GV(p-S)(p-S)LD)
Target	Phospho-IRF7 (Ser471 + Ser472)
Preservatives	0.01M TBS(pH7.4) with 1% rAlbumin, 0.03% Proclin300 and 50% Glycerol.
Form/Appearance	Liquid
Concentration	1mg/ml
Storage	Shipped at 4°C. Store at -20 °C for one year. Avoid repeated freeze/thaw cycles.
Note	For research use only
Isotype	IgG
Clonality	Polyclonal
MW	54 kDa
Uniprot ID	Q92985
Dilution Range	WB=1:500-2000, IHC-P=1:100-500, ICC=1:100
Expiration Date	12 months from date of receipt.



Paraffin-embedded mouse pancreas tissue ...



Paraffin-embedded rat spleen tissue fixe...



Western blot analysis of rat kidney lysa...