
Product Datasheet

ILT2 antibody (orb6231)

Description

ILT2 antibody

Species/Host

Rabbit

Reactivity

Guinea pig, Human, Mouse, Rat

Conjugation

Unconjugated

Tested Applications

ICC, IF, IHC-P, WB

Immunogen

KLH conjugated synthetic peptide derived from human ILT2. Please contact us for the exact immunogen sequence. The peptide is available as orb12920.

Target

ILT2

Form/Appearance

10 mM PBS, 0.02% sodium azide

Concentration

- 100 µg (in 200 µl): 0.5 mg/ml- 200 µg (in 400 µl): 0.5 mg/ml

Storage

Store at 4°C for up to two weeks. For long term storage, aliquot and store at -20°C, avoid freeze/thaw cycles.

Note

For research use only

Isotype

IgG

Clonality

Polyclonal

Purity

Polyclonal antibodies are purified by peptide affinity chromatography

MW

71 kDa

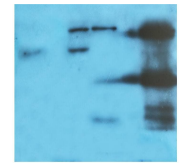
Uniprot ID
[Q8NHL6](#)
NCBI
[001081637](#), [001075106](#)
Entrez
[10859](#)
Dilution Range

IF/ICC: 1:50-400, IHC-P: 1:50-400, WB: 1:200-1000

Expiration Date

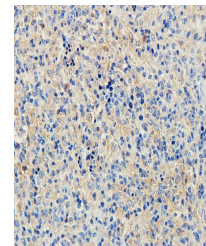
12 months from date of receipt.

1 2 3 4 5 6

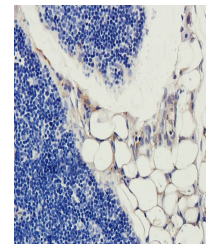


WB analysis of rat lymph node (lane 1),

...



IHC-P staining of guinea pig spleen tiss...



Immunohistochemical staining of rat thyr...