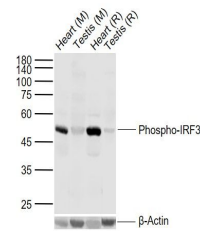


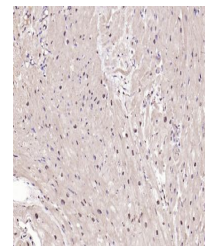
Product Datasheet

IRF3 (phospho-Ser396) antibody (orb6225)

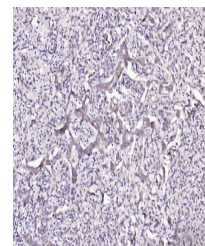
Description	IRF3 (phospho-Ser396) antibody
Species/Host	Rabbit
Reactivity	Human, Rat
Conjugation	Unconjugated
Tested Applications	ICC, IF, IHC-P, WB
Immunogen	KLH conjugated synthesised phosphopeptide derived from human IRF3 around the phosphorylation site of Ser396 (LHI(p-S)NS)
Target	Phospho-IRF3 (Ser396)
Preservatives	0.01M TBS(pH7.4) with 1% rAlbumin, 0.03% Proclin300 and 50% Glycerol.
Form/Appearance	Liquid
Concentration	1mg/ml
Storage	Shipped at 4°C. Store at -20 °C for one year. Avoid repeated freeze/thaw cycles.
Note	For research use only
Isotype	IgG
Clonality	Polyclonal
Purity	affinity purified by Protein A
MW	47 kDa
Uniprot ID	Q14653
Dilution Range	WB=1:500-2000 ELISA=1:5000-10000 IHC-P=1:100-500 IHC-F=1:100-500 ICC=1:100 IF=1:100-500
Expiration Date	12 months from date of receipt.



WB analysis of Lane 1: Mouse Heart tissue...



Immunohistochemical analysis of formalin...



Immunohistochemical analysis of formalin...