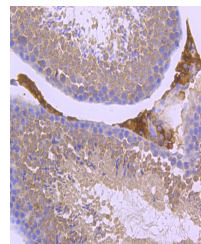


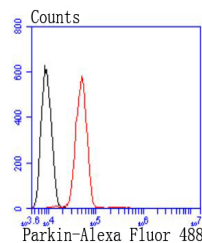
Product Datasheet

Parkin Antibody (orb622128)

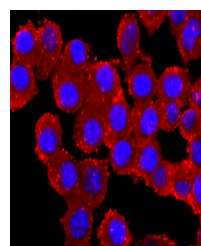
Description	Parkin Antibody
Species/Host	Rabbit
Reactivity	Human, Mouse, Rat
Conjugation	Unconjugated
Tested Applications	FC, ICC, IHC, IP, WB
Form/Appearance	1*TBS (pH7.4), 1%rAlbumin, 40%Glycerol. Preservative: 0.05% Sodium Azide.
Storage	Store at -20°C for long term preservation (recommended). Store at 4°C for short term use.
Note	For research use only
Application notes	WB: 1:500-1:1000 IHC: 1:50-1:200 ICC: 1:50-1:200 IP: 1:50 FC: 1:50-1:100
Clonality	Recombinant
MW	52 kDa
Uniprot ID	O60260
Expiration Date	12 months from date of receipt.



Immunohistochemical analysis of paraffin...



Flow cytometric analysis of SH-SY-5Y cel...



Immunofluorescence analysis of N2A cells...