

Product Datasheet

IL6 antibody (orb6210)

| | |
|----------------------------|---|
| Description | IL6 antibody |
| Species/Host | Rabbit |
| Conjugation | Unconjugated |
| Tested Applications | ELISA, ICC, IF, IHC-P, WB |
| Immunogen | KLH conjugated synthetic peptide derived from human IL6. Please contact us for the exact immunogen sequence. The peptide is available as orb374783. |
| Target | IL6 |
| Form/Appearance | 10 mM PBS, 0.02% sodium azide |
| Concentration | - 100 µg (in 200 µl): 0.5 mg/ml- 200 µg (in 400 µl): 0.5 mg/ml |
| Storage | Maintain refrigerated at 2-8°C for up to 2 weeks. For long term storage store at -20°C in small aliquots to prevent freeze-thaw cycles. |
| Note | For research use only |
| Isotype | IgG |
| Clonality | Polyclonal |
| Purity | Polyclonal antibodies are purified by peptide affinity chromatography |
| MW | 24 kDa |
| Uniprot ID | P08505, P20607 |
| NCBI | 11, 112445, 031168 |
| Entrez | 16193 |
| Dilution Range | IF/ICC: 1:100-800, WB:1:200-1000, IHC-P:1:100-800 |

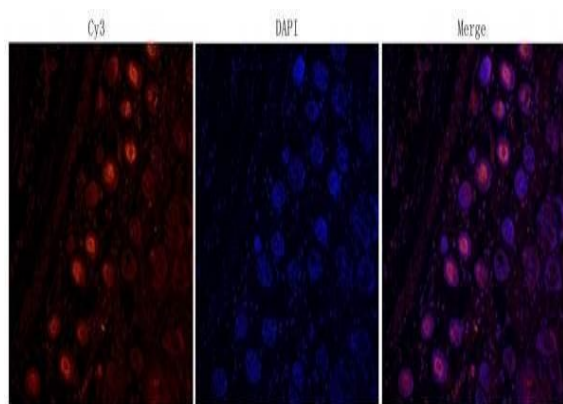
Biorbyt Ltd.

7 Signet Court, Swann's Road,
Cambridge, CB5 8LA, United Kingdom
Email: info@biorbyt.com, support@biorbyt.com
Phone: [+44 \(0\) 1223 859-353](tel:+44201223859353) | Fax: [+1 \(415\) 651-8558](tel:+14156518558)

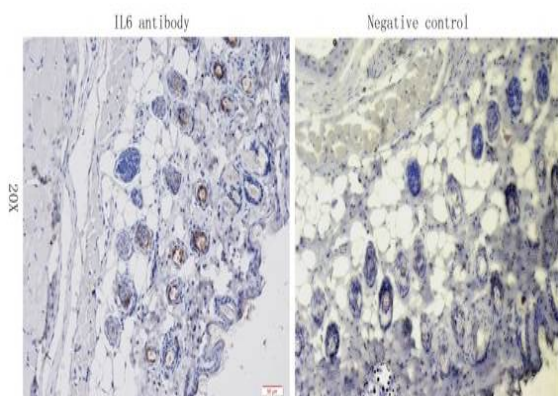
Biorbyt LLC.

68 TW Alexander Drive,
Durham, NC, 27713, United States
Email: info@biorbyt.com, support@biorbyt.com
Phone: [+1 \(415\) 906-5211](tel:+14159065211) | Fax: [+1 \(415\) 651-8558](tel:+14156518558)

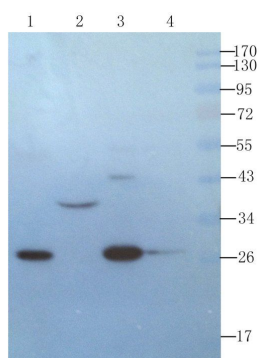
Expiration Date 12 months from date of receipt.



IF image of mouse skin tissue using anti-IL6 (primary antibody at 1:200)



IHC-P staining of mouse skin tissue using anti-IL6 (dilution at 1:200)



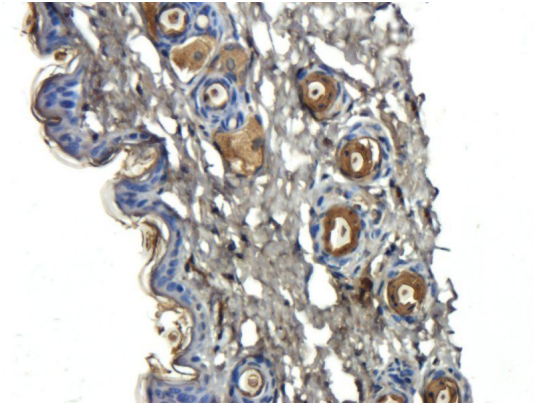
Western blot analysis of mouse liver (lane 1), rat stomach (lane 2), mouse stomach (lane 3), rat spleen (lane 4) using IL6 antibody (1 ug/ml)

Biorbyt Ltd.

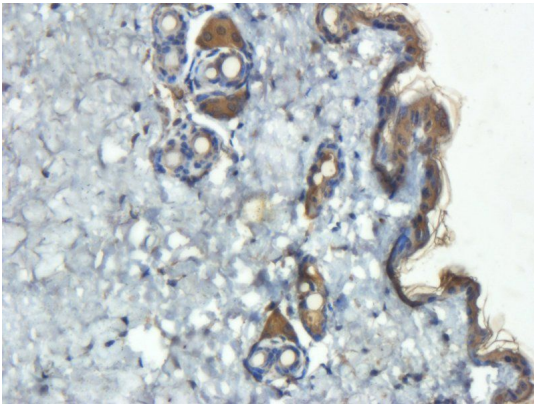
7 Signet Court, Swann's Road,
Cambridge, CB5 8LA, United Kingdom
Email: info@biorbyt.com, support@biorbyt.com
Phone: [+44 \(0\) 1223 859-353](tel:+44(0)1223859353) | Fax: [+1 \(415\) 651-8558](tel:+1(415)6518558)

Biorbyt LLC.

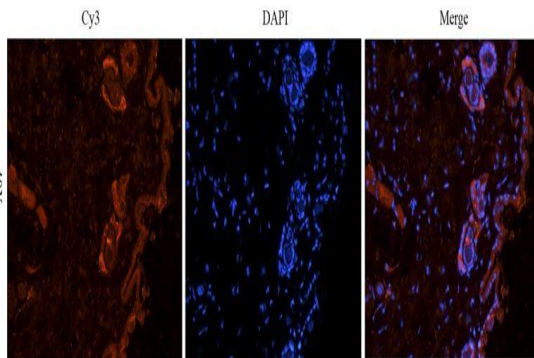
68 TW Alexander Drive,
Durham, NC, 27713, United States
Email: info@biorbyt.com, support@biorbyt.com
Phone: [+1 \(415\) 906-5211](tel:+1(415)9065211) | Fax: [+1 \(415\) 651-8558](tel:+1(415)6518558)



Immunohistochemical staining of paraffin embedded mouse skin tissue using anti-IL6 (2.5 ug/ml)



Immunohistochemical staining of mouse skin tissue using IL6 antibody (2.5 ug/ml)



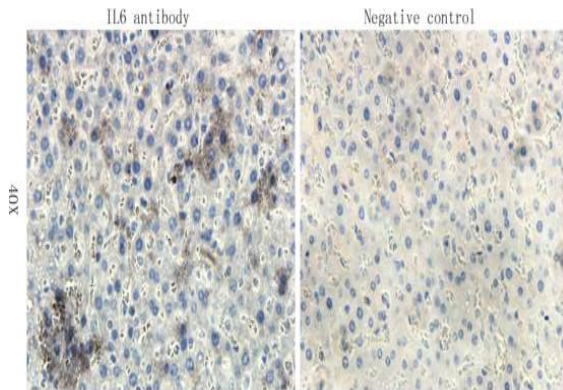
Immunofluorescence analysis of mouse skin tissue using IL6 antibody (2.5 ug/ml)

Biorbyt Ltd.

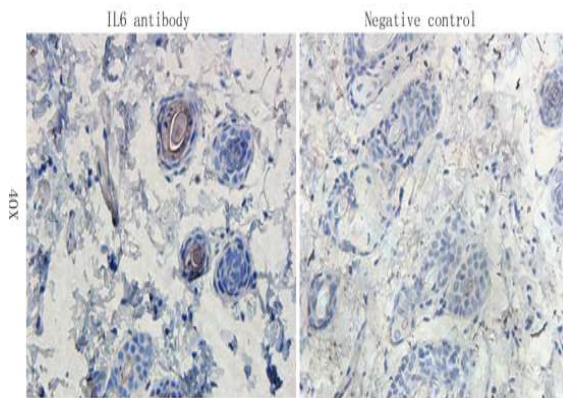
7 Signet Court, Swann's Road,
Cambridge, CB5 8LA, United Kingdom
Email: info@biorbyt.com, support@biorbyt.com
Phone: [+44 \(0\) 1223 859-353](tel:+44(0)1223859353) | Fax: [+1 \(415\) 651-8558](tel:+1(415)6518558)

Biorbyt LLC.

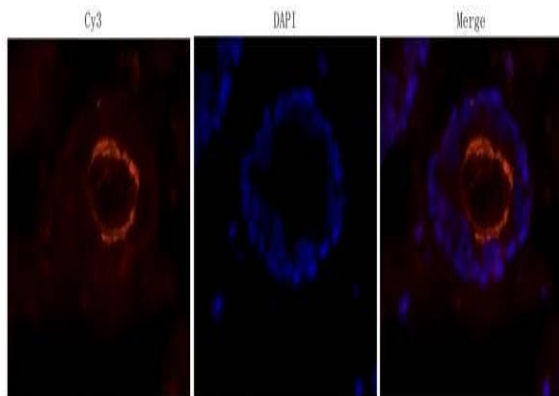
68 TW Alexander Drive,
Durham, NC, 27713, United States
Email: info@biorbyt.com, support@biorbyt.com
Phone: [+1 \(415\) 906-5211](tel:+1(415)9065211) | Fax: [+1 \(415\) 651-8558](tel:+1(415)6518558)



Immunohistochemical staining of paraffin embedded rat liver tissue using IL6 antibody (primary antibody at 1:200)



Immunohistochemical staining of rat skin tissue using anti-IL6 (dilution of primary antibody - 1:200)



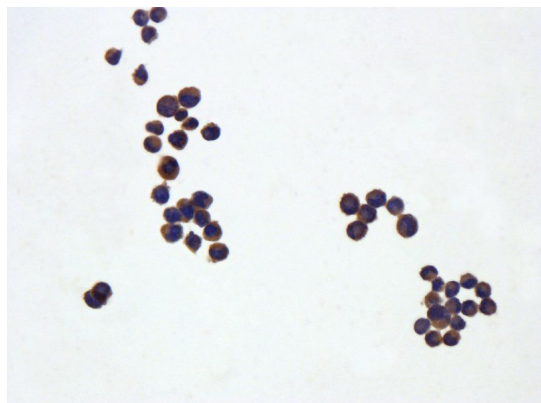
Immunofluorescence image of rat skin tissue using IL6 antibody (dilution at 1:200)

Biorbyt Ltd.

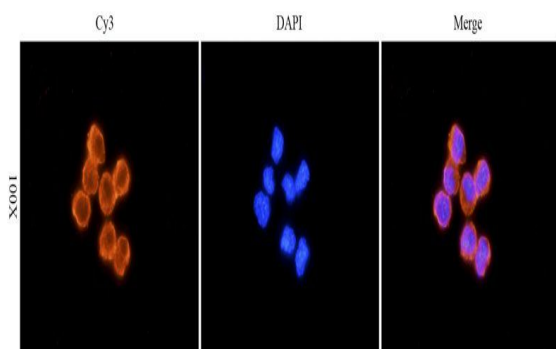
7 Signet Court, Swann's Road,
Cambridge, CB5 8LA, United Kingdom
Email: info@biorbyt.com, support@biorbyt.com
Phone: [+44 \(0\) 1223 859-353](tel:+44(0)1223859353) | Fax: [+1 \(415\) 651-8558](tel:+1(415)6518558)

Biorbyt LLC.

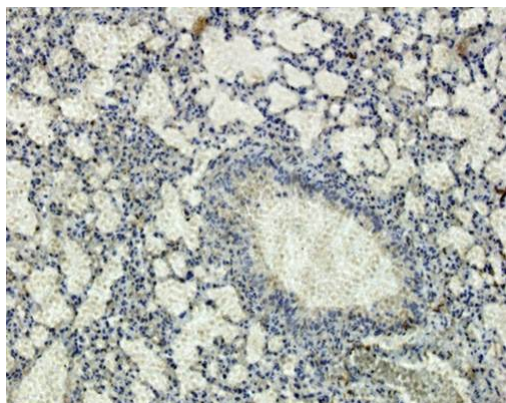
68 TW Alexander Drive,
Durham, NC, 27713, United States
Email: info@biorbyt.com, support@biorbyt.com
Phone: [+1 \(415\) 906-5211](tel:+1(415)9065211) | Fax: [+1 \(415\) 651-8558](tel:+1(415)6518558)



IF image of mouse sp20 mouse myeloma cells tissue using anti-IL6 (primary antibody at 1:100)



Immunofluorescence analysis of mouse sp20 mouse myeloma cells tissue using IL6 antibody (dilution of primary antibody - 1:100)



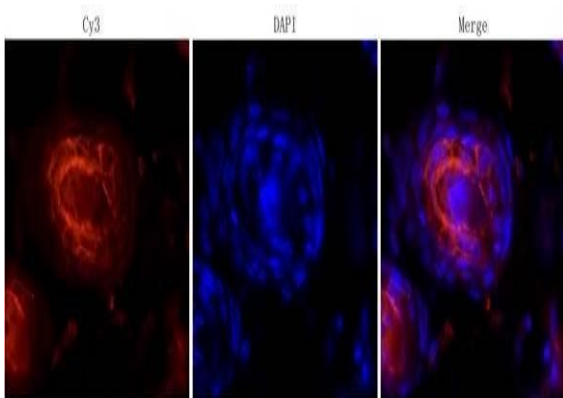
IHC-P staining of mouse lung tissue using IL6 antibody (dilution at 1:200)

Biorbyt Ltd.

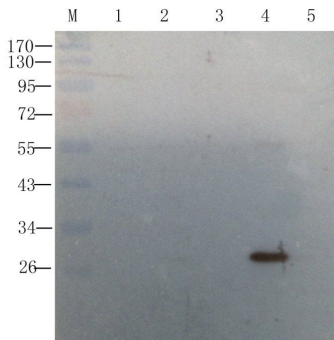
7 Signet Court, Swann's Road,
Cambridge, CB5 8LA, United Kingdom
Email: info@biorbyt.com, support@biorbyt.com
Phone: [+44 \(0\) 1223 859-353](tel:+44(0)1223859353) | Fax: [+1 \(415\) 651-8558](tel:+1(415)6518558)

Biorbyt LLC.

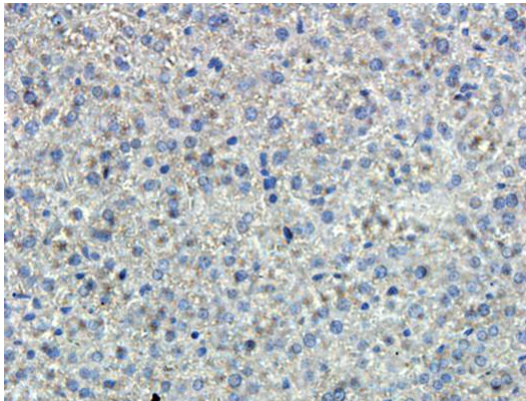
68 TW Alexander Drive,
Durham, NC, 27713, United States
Email: info@biorbyt.com, support@biorbyt.com
Phone: [+1 \(415\) 906-5211](tel:+1(415)9065211) | Fax: [+1 \(415\) 651-8558](tel:+1(415)6518558)



Immunofluorescence analysis of mouse skin tissue using IL6 antibody (dilution of primary antibody - 1:200)



WB analysis of mouse liver (lane 1), rat stomach (lane 2), mouse stomach (lane 3), rat spleen (lane 4), rat brain (lane 5) using IL6 antibody (1 ug/ml)



IHC-P staining of mouse liver tissue using IL6 antibody (dilution at 1:200)

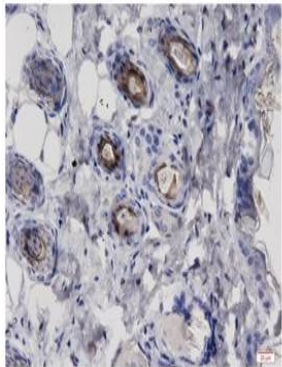
Biorbyt Ltd.

7 Signet Court, Swann's Road,
Cambridge, CB5 8LA, United Kingdom
Email: info@biorbyt.com, support@biorbyt.com
Phone: [+44 \(0\) 1223 859-353](tel:+44(0)1223859353) | Fax: [+1 \(415\) 651-8558](tel:+1(415)6518558)

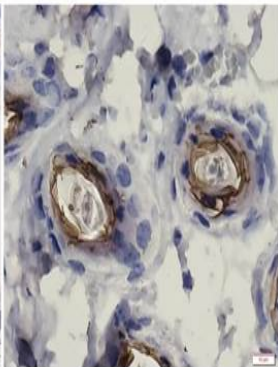
Biorbyt LLC.

68 TW Alexander Drive,
Durham, NC, 27713, United States
Email: info@biorbyt.com, support@biorbyt.com
Phone: [+1 \(415\) 906-5211](tel:+1(415)9065211) | Fax: [+1 \(415\) 651-8558](tel:+1(415)6518558)

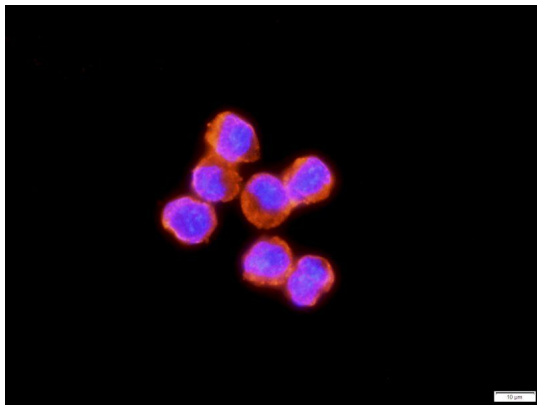
IL6 antibody 40X



IL6 antibody 100X



Immunohistochemical staining of mouse skin tissue using anti-IL6 (dilution of primary antibody - 1:200)



Immunofluorescence image of mouse sp20 mouse myeloma cells tissue using IL6 antibody (dilution at 1:100)

Biorbyt Ltd.

7 Signet Court, Swann's Road,
Cambridge, CB5 8LA, United Kingdom
Email: info@biorbyt.com, support@biorbyt.com
Phone: [+44 \(0\) 1223 859-353](tel:+44(0)1223859353) | Fax: [+1 \(415\) 651-8558](tel:+1(415)6518558)

Biorbyt LLC.

68 TW Alexander Drive,
Durham, NC, 27713, United States
Email: info@biorbyt.com, support@biorbyt.com
Phone: [+1 \(415\) 906-5211](tel:+1(415)9065211) | Fax: [+1 \(415\) 651-8558](tel:+1(415)6518558)