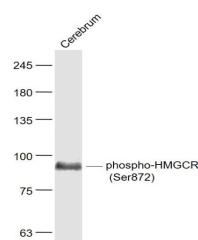


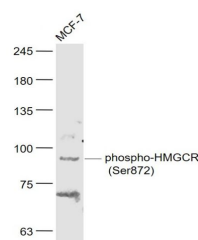
Product Datasheet

HMGCR (phospho-Ser872) antibody (orb6191)

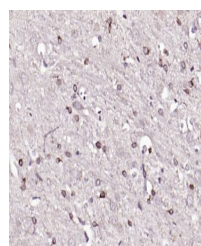
Description	HMGCR (phospho-Ser872) antibody
Species/Host	Rabbit
Reactivity	Human, Mouse, Rat
Conjugation	Unconjugated
Tested Applications	FC, IHC-P, WB
Immunogen	KLH conjugated Synthesised phosphopeptide derived from human HMGCR around the phosphorylation site of Ser872 (NR(p-S)KI)
Target	phospho-HMGCR (Ser872)
Preservatives	0.01M TBS(pH7.4) with 1% rAlbumin, 0.03% Proclin300 and 50% Glycerol.
Form/Appearance	Liquid
Concentration	1mg/ml
Storage	Shipped at 4°C. Store at -20 °C for one year. Avoid repeated freeze/thaw cycles.
Note	For research use only
Isotype	IgG
Clonality	Polyclonal
MW	97 kDa
Uniprot ID	P04035
Dilution Range	WB=1:500-2000, IHC-P=1:100-500, Flow-Cyt=1ug/Test, IHC-F=1:100-500, IF=1:100-500, ELISA=1:5000-10000
Expiration Date	12 months from date of receipt.



Western blot analysis of Cerebrum (Mouse...)



Western blot analysis of MCF-7 (Human) Ce...



Immunohistochemical staining of mouse br...