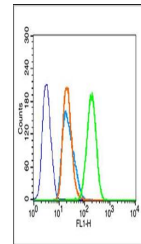


Product Datasheet

Histone H3 (phospho-Ser28) antibody (orb6168)

Description	Histone H3 (phospho-Ser28) antibody
Species/Host	Rabbit
Reactivity	Human
Conjugation	Unconjugated
Tested Applications	FC
Immunogen	KLH conjugated synthesised phosphopeptide derived from human Histone H3 around the phosphorylation site of Ser28 (RK(p-S)AP)
Target	Phospho-Histone H3 (Ser28)
Preservatives	0.01M TBS(pH7.4) with 1% rAlbumin, 0.03% Proclin300 and 50% Glycerol.
Form/Appearance	Liquid
Concentration	1mg/ml
Storage	Shipped at 4°C. Store at -20 °C for one year. Avoid repeated freeze/thaw cycles.
Note	For research use only
Isotype	IgG
Clonality	Polyclonal
MW	15 kDa
CAS Number	Histone H3.1
Uniprot ID	P68431
Dilution Range	Flow-Cyt=1µg /Test
Expiration Date	12 months from date of receipt.



Flow cytometric analysis of HeLa cells u...