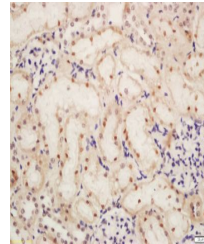


Product Datasheet

Tri Methyl-Histone H3 (K36) antibody (orb6154)

Description	Tri Methyl-Histone H3 (K36) antibody
Species/Host	Rabbit
Reactivity	Human, Mouse
Conjugation	Unconjugated
Tested Applications	FC, IHC-P, WB
Immunogen	KLH conjugated synthesised methylpeptide derived from human Histone H3 around the methylation site of tri methyl K36 (GV(Tri Methyl-K)KP)
Target	Histone H3 (tri methyl K36)
Preservatives	0.01M TBS(pH7.4) with 1% rAlbumin, 0.03% Proclin300 and 50% Glycerol.
Form/Appearance	Liquid
Concentration	1mg/ml
Storage	Shipped at 4°C. Store at -20 °C for one year. Avoid repeated freeze/thaw cycles.
Note	For research use only
Isotype	IgG
Clonality	Polyclonal
MW	15 kDa
CAS Number	Histone H3.1
Uniprot ID	P68431
Dilution Range	WB=1:500-2000, IHC-P=1:100-500, Flow-Cyt=1µg /Test, IHC-F=1:100-500, ICC=1:100-500, IF=1:100-500, ELISA=1:5000-10000
Expiration Date	12 months from date of receipt.



Immunohistochemical staining of rat kidn...