

Product Datasheet

Neurofibromin/NF1 Antibody (orb614130)

Description

Neurofibromin/NF1 Antibody

Species/Host

Rabbit

Reactivity

Human

Conjugation

Unconjugated

Tested Applications

ELISA, FC, ICC, IF, IHC, WB

Immunogen

E.coli-derived human Neurofibromin/NF1 recombinant protein (Position: R160-Q270).

Form/Appearance

Lyophilized

Concentration

Adding 0.2 ml of distilled water will yield a concentration of 500 µg/ml.

Storage

Store at -20°C for one year from date of receipt. After reconstitution, at 4°C for one month. It can also be aliquotted and stored frozen at -20°C for six months. Avoid repeated freeze-thaw cycles.

Note

For research use only

Application notes

Tested Species: In-house tested species with positive results. By Heat: Boiling the paraffin sections in 10mM citrate buffer, pH6.0, for 20mins is required for the staining of formalin/paraffin sections. Other applications have not been tested. Optimal dilutions should be determined by end users. . Add 0.2ml of distilled water will yield a concentration of 500ug/ml.

Isotype

Rabbit IgG

Clonality

Polyclonal

MW

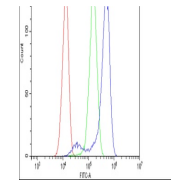
319 kDa

Uniprot ID
[P21359](#)
Dilution Range

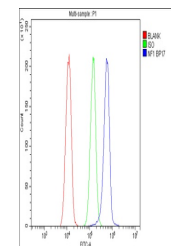
 Western blot, 0.25-0.5µg/ml, Human Immunohistochemistry (Paraffin-embedded Section), 0.5-1µg/ml, Human Immunocytochemistry/Immunofluorescence, 2µg/ml, Human Flow Cytometry, 1-3µg/1x10⁶ cells, Human Direct ELISA, 0.1-0.5µg/ml, Human

Expiration Date

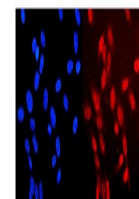
12 months from date of receipt.



Flow Cytometry analysis of HeLa cells us...



Flow Cytometry analysis of A549 cells us...



IF analysis of NF1 using anti-NF1 antibo...