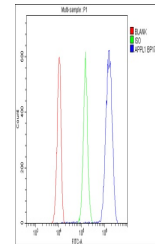


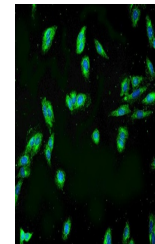
Product Datasheet

APPL/APPL1 Antibody (orb614095)

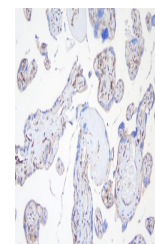
Description	APPL/APPL1 Antibody
Species/Host	Rabbit
Reactivity	Human, Mouse, Rat
Conjugation	Unconjugated
Tested Applications	ELISA, FC, ICC, IF, IHC, WB
Immunogen	E.coli-derived human APPL/APPL1 recombinant protein (Position: K91-R668).
Form/Appearance	Lyophilized
Concentration	Adding 0.2 ml of distilled water will yield a concentration of 500 µg/ml.
Storage	Store at -20°C for one year from date of receipt. After reconstitution, at 4°C for one month. It can also be aliquotted and stored frozen at -20°C for six months. Avoid repeated freeze-thaw cycles.
Note	For research use only
Application notes	Tested Species: In-house tested species with positive results. By Heat: Boiling the paraffin sections in 10mM citrate buffer, pH6.0, for 20mins is required for the staining of formalin/paraffin sections. Other applications have not been tested. Optimal dilutions should be determined by end users. . Add 0.2ml of distilled water will yield a concentration of 500ug/ml.
Isotype	Rabbit IgG
Clonality	Polyclonal
MW	85 kDa
Uniprot ID	Q9UKG1
Expiration Date	12 months from date of receipt.



Flow Cytometry analysis of A549 cells us...



IF analysis of APPL1 using anti-APPL1 an...



IHC analysis of APPL1 using anti-APPL1 a...