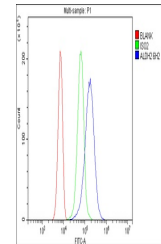


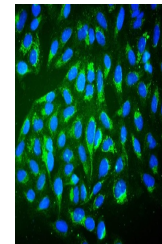
Product Datasheet

ALDH2 Antibody(monoclonal, 6H2) (orb614090)

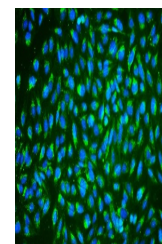
Description	ALDH2 Antibody(monoclonal, 6H2)
Species/Host	Mouse
Reactivity	Human, Mouse, Rat
Conjugation	Unconjugated
Tested Applications	FC, ICC, IF, WB
Immunogen	A synthetic peptide corresponding to a sequence at the N-terminus of human ALDH2 (18-48aa SAAATQAVPAPNQQPEVFCNQIFINNEWHDA), different from the related mouse sequence by two amino acids, and from the related rat sequence by one amino acid.
Form/Appearance	Lyophilized
Storage	Store at -20°C for one year from date of receipt. After reconstitution, at 4°C for one month. It can also be aliquotted and stored frozen at -20°C for six months. Avoid repeated freeze-thaw cycles.
Note	For research use only
Application notes	Tested Species: In-house tested species with positive results. Add 0.2ml of distilled water will yield a concentration of 500µg/ml.
Isotype	Mouse IgG1
Clonality	Monoclonal
MW	56381
Uniprot ID	P05091
Expiration Date	12 months from date of receipt.



Flow Cytometry analysis of SiHa cells us...



IF analysis of ALDH2 using anti-ALDH2 an...



IF analysis of ALDH2 using anti-ALDH2 an...