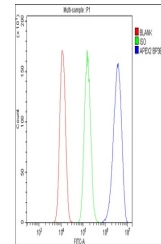


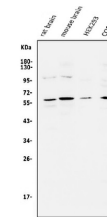
Product Datasheet

APEX2 Antibody (orb614087)

Description	APEX2 Antibody
Species/Host	Rabbit
Reactivity	Human, Monkey, Mouse, Rat
Conjugation	Unconjugated
Tested Applications	FC, WB
Immunogen	E.coli-derived human APEX2 recombinant protein (Position: L102-A210). Human APEX2 shares 91.7% amino acid (aa) sequence identity with mouse APEX2.
Form/Appearance	Lyophilized
Concentration	Adding 0.2 ml of distilled water will yield a concentration of 500 µg/ml.
Storage	Store at -20°C for one year from date of receipt. After reconstitution, at 4°C for one month. It can also be aliquotted and stored frozen at -20°C for six months. Avoid repeated freeze-thaw cycles.
Note	For research use only
Application notes	Tested Species: In-house tested species with positive results. Predicted Species: Species predicted to be fit for the product based on sequence similarities. Other applications have not been tested. Optimal dilutions should be determined by end users. . Add 0.2ml of distilled water will yield a concentration of 500ug/ml.
Isotype	Rabbit IgG
Clonality	Polyclonal
MW	57401 MW
Uniprot ID	Q9UBZ4
Expiration Date	12 months from date of receipt.



Flow Cytometry analysis of A549 cells us...



WB analysis using anti-APEX2 antibody.La...