
Product Datasheet

Ephrin B1-B3 antibody (orb614007)

Description

Ephrin B1-B3 antibody

Species/Host

Rabbit

Reactivity

Human, Mouse, Xenopus

Conjugation

Unconjugated

Tested Applications

ELISA, IF, WB

Immunogen

Anti-Ephrin B1, B2, B3 antibody was prepared from whole rabbit serum produced by repeated immunizations with a synthetic peptide corresponding to C-terminal portion of human Ephrin B1, B2, B3 conjugated to Keyhole Limpet Hemocyanin (KLH).

Preservatives

0.01% (w/v) Sodium Azide

Form/Appearance

Liquid (sterile filtered)

Concentration

1.05 mg/mL

Storage

Store vial at -20° C or below prior to opening. This vial contains a relatively low volume of reagent (25 µL). To minimize loss of volume dilute 1:10 by adding 225 µL of the buffer stated above directly to the vial. Recap, mix thoroughly and briefly centrifuge to collect the volume at the bottom of the vial. Use this intermediate dilution when calculating final dilutions as recommended below. Store the vial at -20°C or below after dilution. Avoid cycles of freezing and thawing.

Note

For research use only

Application notes

Anti-Ephrin B1, B2, B3 Antibody has been tested in ELISA, Western Blot, and Immunofluorescence. Expect a band at ~35-38 kDa in western blot using appropriate lysates or tissues. Positive control used *Xenopus laevis* and mouse kidney in WB and *Xenopus laevis* in IF.

Isotype

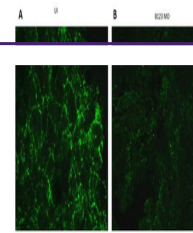
IgG

Clonality

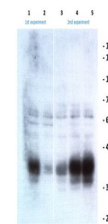
Polyclonal

Purity

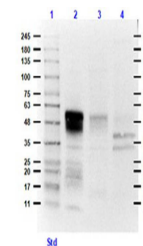
This affinity purified antibody is directed against human Ephrin B1, B2, B3. This product was affinity purified from monospecific antiserum by immunoaffinity purification. A BLAST analysis was used to suggest cross-reactivity with the antigen based on 100% homology with Ephrin-B1 to human, mouse, rat, and *Gallus gallus*; 100% homology with Ephrin-B2 to mouse; 100% homology with Ephrin-B3



Immunofluorescence of Rabbit Anti-Ephrin...



Western Blot of Rabbit Anti-Ephrin B1-B3...



Western Blot of Rabbit Anti-Ephrin B1-B3...