
Product Datasheet

Ephrin B1-B3 antibody (orb614006)

Description

Ephrin B1-B3 antibody

Species/Host

Rabbit

Reactivity

Human, Mouse, Xenopus

Conjugation

Unconjugated

Tested

ELISA, IF, WB

Applications
Immunogen

Anti-Ephrin B1, B2, B3 antibody was prepared from whole rabbit serum produced by repeated immunizations with a synthetic peptide corresponding to C-terminal portion of human Ephrin B1, B2, B3 conjugated to Keyhole Limpet Hemocyanin (KLH).

Preservatives

0.01% (w/v) Sodium Azide

Form/Appearance

Liquid (sterile filtered)

Concentration

1.05mg/mL

Storage

Store vial at -20° C prior to opening. Aliquot contents and freeze at -20° C or below for extended storage. Avoid cycles of freezing and thawing. Centrifuge product if not completely clear after standing at room temperature. This product is stable for several weeks at 4° C as an undiluted liquid. Dilute only prior to immediate use.

Note

For research use only

Application notes

Anti-Ephrin B1, B2, B3 Antibody has been tested in ELISA, Western Blot, and Immunofluorescence. Expect a band at ~35-38 kDa in western blot using appropriate lysates or tissues. Positive control used *Xenopus laevis* and mouse kidney in WB and *Xenopus laevis* in IF.

Isotype

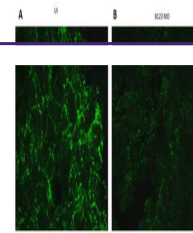
IgG

Clonality

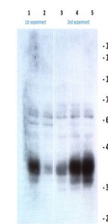
Polyclonal

Purity

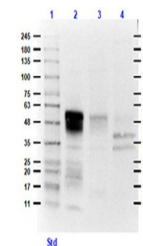
This affinity purified antibody is directed against human Ephrin B1, B2, B3. This product was affinity purified from monospecific antiserum by immunoaffinity purification. A BLAST analysis was used to suggest cross-reactivity with the antigen based on 100% homology with Ephrin-B1 to human, mouse, rat, and *Gallus gallus*; 100% homology with Ephrin-B2 to mouse; 100% homology with Ephrin-B3 to human and mouse.

Uniprot ID
P52800


Immunofluorescence of Rabbit Anti-Ephrin...



Western Blot of Rabbit Anti-Ephrin B1-B3...



Western Blot of Rabbit Anti-Ephrin B1-B3...