

Product Datasheet

Anti-Bet v 1 [M0418] (orb613899)

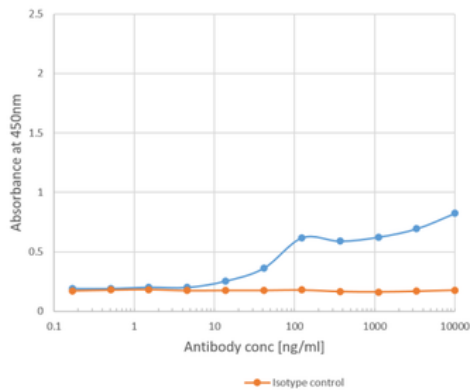
Description	Rabbit monoclonal antibody to Bet v 1
Species/Host	Human
Reactivity	Plant
Conjugation	Unconjugated
Tested Applications	ELISA
Immunogen	Bet v 1-A, a major allergen of the European white birch.
Target	Bet v 1
Preservatives	PBS with 0.02% Proclin 300.
Concentration	1 mg/ml
Storage	Maintain refrigerated at 2-8°C for up to 2 weeks. For long term storage store at -20°C in small aliquots to prevent freeze-thaw cycles.
Note	For research use only
Isotype	Human IgG
Clonality	Monoclonal
Clone Number	M0418
Purity	Purified
Uniprot ID	P15494
Expiration Date	12 months from date of receipt.

Biorbyt Ltd.

7 Signet Court, Swann's Road,
Cambridge, CB5 8LA, United Kingdom
Email: info@biorbyt.com, support@biorbyt.com
Phone: [+44 \(0\) 1223 859-353](tel:+44(0)1223859353) | Fax: [+1 \(415\) 651-8558](tel:+1(415)6518558)

Biorbyt LLC.

68 TW Alexander Drive,
Durham, NC, 27713, United States
Email: info@biorbyt.com, support@biorbyt.com
Phone: [+1 \(415\) 906-5211](tel:+1(415)9065211) | Fax: [+1 \(415\) 651-8558](tel:+1(415)6518558)



Binding curve of anti-Bet v 1 antibody M0418 (orb613899) to Bet v 1 ELISA Plate coated with Bet v 1-A at a concentration of 2 µg/ml. A 3-fold serial dilution from 10000 to 0.1 ng/ml was performed using orb613899. For detection, a 1:4000 dilution of HRP-labelled goat anti-rabbit antibody was used. Absorbance at 450nm does not reach a plateau but falls slightly before increasing once more, as also observed for orb613897. This is suggestive of two binding sites on Bet v 1-A for which orb613899 has differing affinities.

Biorbyt Ltd.

7 Signet Court, Swann's Road,
Cambridge, CB5 8LA, United Kingdom
Email: info@biorbyt.com, support@biorbyt.com
Phone: [+44 \(0\) 1223 859-353](tel:+44(0)1223859353) | Fax: [+1 \(415\) 651-8558](tel:+1(415)6518558)

Biorbyt LLC.

68 TW Alexander Drive,
Durham, NC, 27713, United States
Email: info@biorbyt.com, support@biorbyt.com
Phone: [+1 \(415\) 906-5211](tel:+1(415)9065211) | Fax: [+1 \(415\) 651-8558](tel:+1(415)6518558)