

Product Datasheet

Anti-Rhodopsin [Rho 1D4] (orb613825)

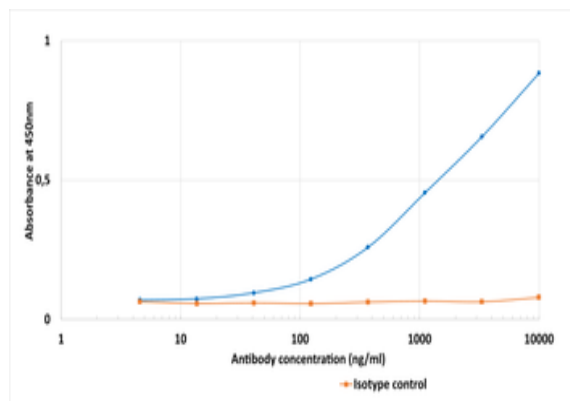
Description	Mouse monoclonal antibody to Rhodopsin
Species/Host	Mouse
Reactivity	Amphibian, Bovine, Human, Mouse, Rat, Zebrafish
Conjugation	Unconjugated
Tested Applications	ELISA, IF, IHC, IP, WB
Immunogen	Bleached bovine rod outer segment (ROS).
Target	Rhodopsin
Preservatives	PBS with 0.02% Proclin 300.
Concentration	1 mg/ml
Storage	Maintain refrigerated at 2-8°C for up to 2 weeks. For long term storage store at -20°C in small aliquots to prevent freeze-thaw cycles.
Note	For research use only
Isotype	Mouse IgG1
Clonality	Monoclonal
Clone Number	Rho 1D4
Purity	Purified
Uniprot ID	P08100
Expiration Date	12 months from date of receipt.

Biorbyt Ltd.

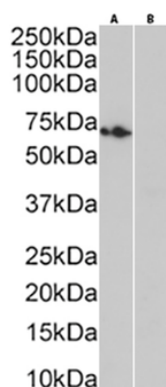
7 Signet Court, Swann's Road,
Cambridge, CB5 8LA, United Kingdom
Email: info@biorbyt.com, support@biorbyt.com
Phone: [+44 \(0\) 1223 859-353](tel:+44(0)1223859353) | Fax: [+1 \(415\) 651-8558](tel:+1(415)6518558)

Biorbyt LLC.

68 TW Alexander Drive,
Durham, NC, 27713, United States
Email: info@biorbyt.com, support@biorbyt.com
Phone: [+1 \(415\) 906-5211](tel:+1(415)9065211) | Fax: [+1 \(415\) 651-8558](tel:+1(415)6518558)



ELISA using 1D4 and Multi Tag protein 2. Binding curves of the mouse IgG1 chimeric version of the Anti-anti-Rho antibody 1D4 (orb613825; dark blue line) and isotype control (orb256381, anti-fluorescein; orange line) to an ELISA plate coated with Multi Tag protein 2 at a concentration of 5 ug/ml.



Western Blot using Anti-Rhodopsin antibody Rho 1D4. Rhodopsin expressing plasmid transfected (A) and non-transfected (B) HEK293 cells lysate (3 µg protein in RIPA buffer) were resolved on a SDS PAGE gel and blots were probed with the chimeric rabbit version of Rho 1D4 (orb613826) at 0.1 µg/ml before detection using an anti-rabbit secondary antibody. A primary incubation of 1h was used and protein was detected by chemiluminescence.



Western Blot using anti-Rhodopsin antibody Rho 1D4 Rat eye lysate (35 µg protein in RIPA buffer) was resolved on a 10% SDS PAGE gel and blots probed with the chimeric rabbit version of Rho 1D4 (orb613826) at 0.0001 µg/ml before detection using an anti-rabbit secondary antibody. A primary incubation of 1h was used and protein was detected by chemiluminescence. The expected band size for monomeric rat (*Rattus norvegicus*) Rhodopsin is 39.0kDa, though this protein is known to form dimers and higher order multimers. orb613826 successfully detected monomeric, dimeric and multimeric Rhodopsin in rat eye lysate.